



altro

the future is safer with altro

Altro Tierra™ static conductive flooring

installation instructions

March 2015

Preparation and storage

The material should be stored for approximately 24 hours at a room temperature of not below 14°C. When laying, the area should be at a steady temperature of between 14°C and 27°C for at least 48 hours prior to, during and for at least 24 hours after completion.

The material should be checked for any possible faults prior to laying and should be cut into lengths and laid loose for conditioning before adhering to the subfloor for a minimum of 2 hours.

Altro Tierra Static Conductive flooring

If the substrate is porous, apply an acrylic primer. Glue down using an acrylic adhesive + copper strip: part number ATCW/50 (length 50m) crosswise in relation to the rolls and spaced no more than 20 m apart.

Specifications

Specification for the glue-down of conductive flooring:

- The electrical resistance of the flooring is between 5×10^4 and 10^6 ohms for conductive flooring according to standard NF EN 13 415-NF EN 1081 (tripod method) or standard NF EN 61-340-4-1 (electrode method) or ASTM F 150 NF PA 99 (surface resistivity ESD S.1 and volume resistivity ESD S 7) or IEC 1340-4-1 (CNET Electrode).
- The adhesive manufacturer must guarantee the stability of the electrical resistance of the dry film, which is given for a service life of more than 10 years.

Specifications for conductive flooring after laying (adhered product)

The regulation requires a value of electrical resistance to earth between 10^5 and 10^7 ohms to take into account losses due to laying.

1. Choice of joint treatment

This material can only be heat-welded (at least 24 hours after gluing).

Important

Joint treatment method for class E rooms: See the section on FINISHES - "Joint treatments". * Skirting must be installed after the flooring is laid.

2. Laying preparation

This flooring does not remove the need to prepare the substrate.

It must be laid on a substrate compliant with DTU 13.3 (paragraphs 8.2 and 8.3).

To guarantee good conductivity, you must ensure that the substrate is level.

Because Altro Tierra Static conductive flooring has specific electrical characteristics it should be laid using the following method.

2.1 - Applying the primer (if necessary)

- Mix thoroughly before each application. Use a roller to apply a thin, even layer of aqueous phase primer with a coverage of about 100 to 150 gr/m².
- Leave to dry according to the adhesive manufacturer's instructions.

2.2 - Earthing the strip

- Coordinate the arrangement of earth connections with the electric power company before you start laying the flooring.

An earthing strip must be provided.

2.3 - Laying the Altro Terra™ static conductive flooring

- Unroll the flooring 24 hours in advance in the room where it will be fitted. As far as possible, and taking account of the roll width, joints between rolls must be situated away from areas of heavy traffic. The rolls must run towards the wall with the main window, or lengthways. Take account of the position of the earth connections.

Important:

- Laying direction: Same direction see general table.
- Heat welding: leave a space of 1 mm between the rolls.

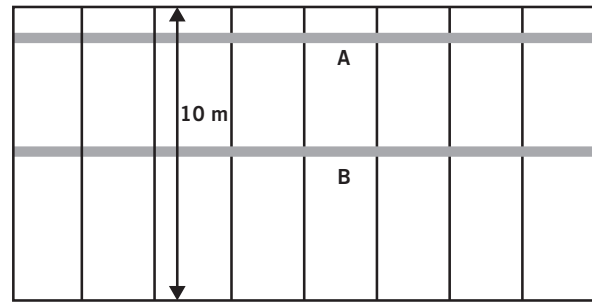
2.4 - Applying adhesive to the substrate and laying the rolls

- Apply adhesive 24 hours after positioning the rolls.
- Lay the flooring in single spread using an aqueous dispersion adhesive (acrylic).
- Fold the rolls in half, then apply the adhesive evenly using an A 2 spatula (TKB standard).
- Coverage: depending on the type and composition of the adhesive (about 300 to 350 gr/m²). The spatula will need to be changed regularly to maintain this coverage.
- Lay the rolls after the specified drying time.
- Fold back the other halves and follow the same steps.
- Do not overlap two adhesive films when you apply more adhesive.
- As you work, remove any fresh adhesive left behind.

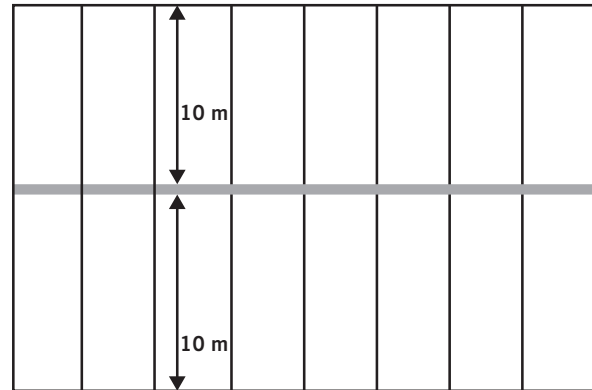
2.5 - Laying the Altro copper strip

- Lay the copper strip crosswise underneath all the rolls.
- Place the copper strip on the adhesive as you lay the rolls.
The furthest point from the continuous strip must not be > 10 m
- If there is an end-to-end joint, place a 1.50 m wide strip across the two rolls.
- The copper strip must **only** be laid after the specified drying time, without excessive smoothing in order not to displace the adhesive underneath.
- After laying the strip, make sure there is no adhesive on top before folding back the rolls.
- The copper strip can be located later by telegraphing.

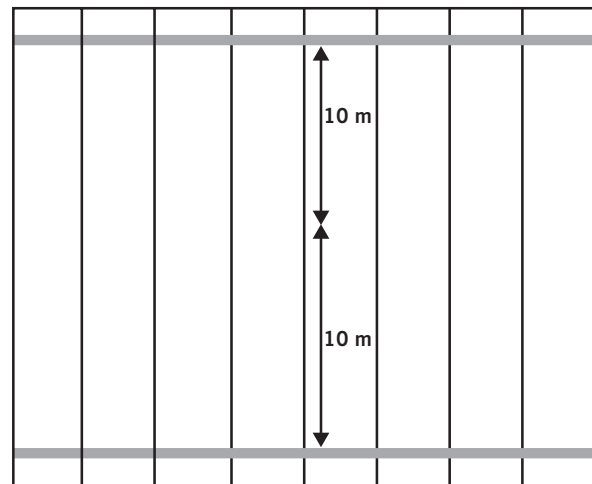
Different scenarios



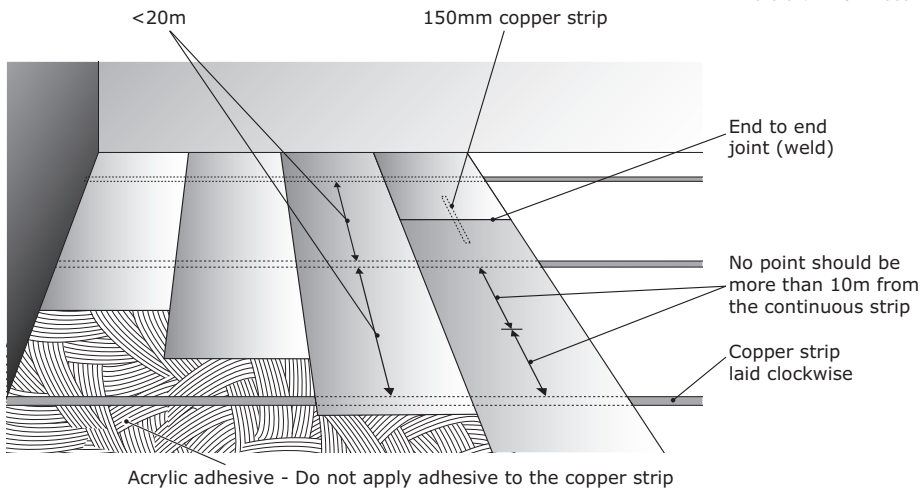
Room < 10 m (lengthwise of the rolls)
1 copper strip running crosswise positioned in the room (A or B).



Room 10 m to 20 m (lengthwise of the rolls)
1 copper strip positioned in the middle of the room.



Room > 20 m (lengthwise of the rolls)
At least 2 copper strips positioned in the room. There must not be more than 10 m between the measuring point and the copper strip.



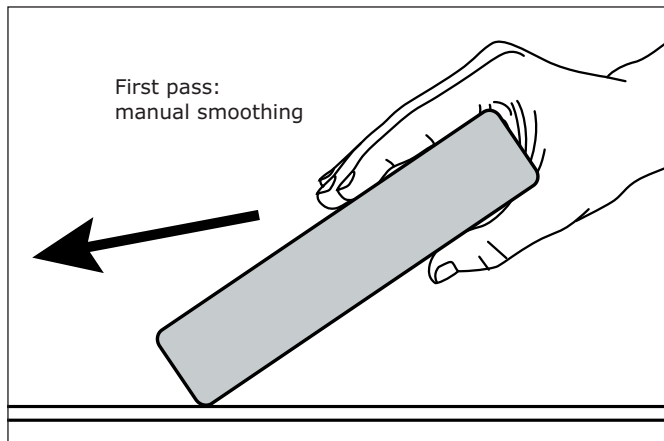
Important:

The information in this document is valid from: 01/04/2014 and is subject to change without notice. In the face of continuous technical improvements, before starting any work, our customers should check with Altro that this document is still in force. Adhered static conductive flooring in rolls. Altro Terra Static conductive flooring with acrylic adhesive.

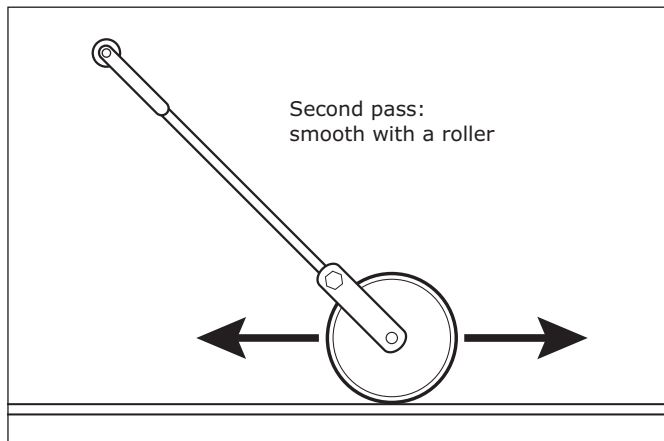
2.6 – Smoothing

Smoothing must be done in two passes:

- Manually using a smoothing block.



- Careful smoothing over the entire surface using a smoothing roller (heavy), to flatten the lines of adhesive and to ensure that the adhesive coats the back of the flooring properly.



Crosswise smoothing over the copper strip

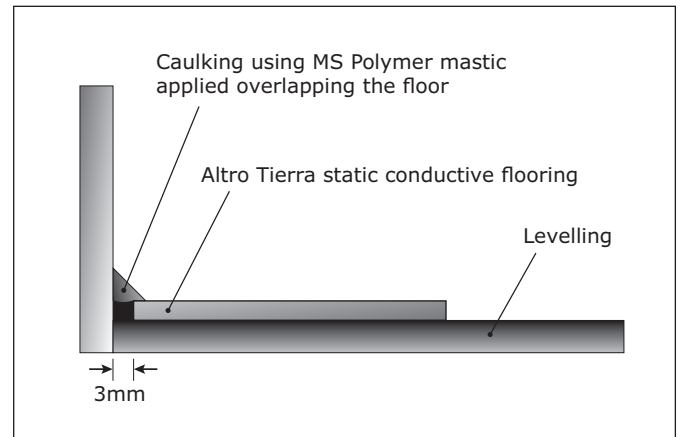
- This is done as the flooring is laid and again after work is finished.

2.7 - Joint treatment

- The flooring is heat welded 24 hours after it is glued down.
See the section on “FINISHES - Joint treatments”.

2.8 - Caulking

- Installed according to classification: E2
This classification requires edging and / or caulking.
- Installed according to classification: E3
See the section on “FINISHES – Skirting”.



2.9 - Time before first use

- For normal foot traffic, the floor can be used 48 hours after completion of work.
- For installing furniture or moving loads on wheels, wait 72 hours after completing the work.
Do not use rubber feet on furniture.

For further information or technical advice

tel: +44 (0) 1462 707604 fax: +44 (0) 1462 707515

email: enquiries@altro.com or explore www.altro.com