



Designed for possibilities.  
Made for people.



# Floor and wall solutions for senior living

Creating a safe, warm and comfortable community for aging adults

# Altro is your foundation for safer senior living

Flooring and walls play a key role in creating attractive, welcoming environments. In senior living communities, flooring and wall cladding must be more than pleasant to look at. They must provide a safe, stable, and durable foundation that can handle the health needs of aging and fragile residents.

Whether the community is small or large, assisted living, memory care or retirement, the choice of floors and walls is critical because you need to minimize risks to the health and safety of your residents and staff. Communities that care for residents of all ages and levels of acuity have even more reason to pay special attention to the properties of the material installed.

From resident showers to neighborhood common areas, Altro can help keep vulnerable people safe. Designed for senior living functionality, Altro flooring and wall cladding combines safety and durability with warm colors and tones that enhance the residents' living environment.

## Trends in senior living

- Providing unique amenities
- Enabling seniors to age in place
- Providing memory care services
- Integrating seniors into the larger community
- Creating home-like settings
- Introducing hospitality design concepts
- Optimizing resident privacy and dignity
- Expanding individual choice
- Using technology to enhance senior living
- Seeking more sustainable environments

## Contents

Introduction and trends	1
Designing for an aging population	3
Decline in visual acuity	5
Color and pattern	7
Colors and what they mean	8
Contrast and LRVs	9
Performance	11
Safety, slip-resistant or smooth?	13
Fit for purpose facility blueprint	15

## Installation area types

Levels of care	17
Entrances, corridors and common spaces	18
Dining rooms	19
Household kitchens, kitchenettes and serveries	21
Resident rooms	23
Resident bathrooms	25
Showers, spas and wet areas	27
Commercial kitchens	29
Back-of-house areas	31
Additional location examples	33

In addition to sources already cited in this booklet, the following sources were also used: [www.asid.org](http://www.asid.org), [www.environmentsforaging.com](http://www.environmentsforaging.com), Healthcare Facilities Management Magazine, American Academy of Healthcare Interior Designers, "Bracing for falls of an aging nation" by Kate Hafner, NY Times



## Designing for an aging population

North America's rapidly growing 65+ population has drastically impacted senior living and the processes behind the design and architecture of its communities.

In order to design effectively for aging adults, it's vital to understand the many ways that aging is likely to affect residents and their perceived physical environment. The physiological changes associated with growing old alter how we perceive the environment around us and are often accompanied by declines in our sense of sight, hearing, touch, smell and taste

In addition, a person's ability to move is impacted by the aging process, which can result in unsteadiness while walking, difficulty getting in and out of a chair, or even a dangerous fall. Any muscle weakness or joint problems can also contribute to mobility issues.

To increase confidence and decrease the chance of falls, the proper flooring and lighting, with handles and other safety measures, must be included. It is because of these many factors that, as we age, the built environment is more difficult to navigate.

Architects and designers will be increasingly called upon to design supportive, livable, helpful, and safe senior living accommodations to remove stress and confusion from an aging person's everyday life.

For more information, register for our **Designing for an aging population** and **Specifying dementia friendly finishes** CEU presentations at [altro.com](http://altro.com).



Scan the QR code to sign up for a CEU today.





### Challenges faced by aging residents

- Changes to hearing and balance
- Changes to pattern of footfall
- Increased use of walking aids
- Loss of peripheral vision
- Color vision changes
- Changes to night vision
- Problems with glare
- Cognitive changes

## Decline in visual acuity

The effects of poor vision are profound, causing difficulty for the person to engage with others, navigate, problem-solve and feel safe. These changes make color perception much more difficult. Senior living facilities need to be designed in a way to accommodate these impairments to make it easier for residents to navigate their space.

Here are a few examples that depict how some of these visual changes appear in real life scenarios.

### Normal eyes



### Yellowing of the eyes



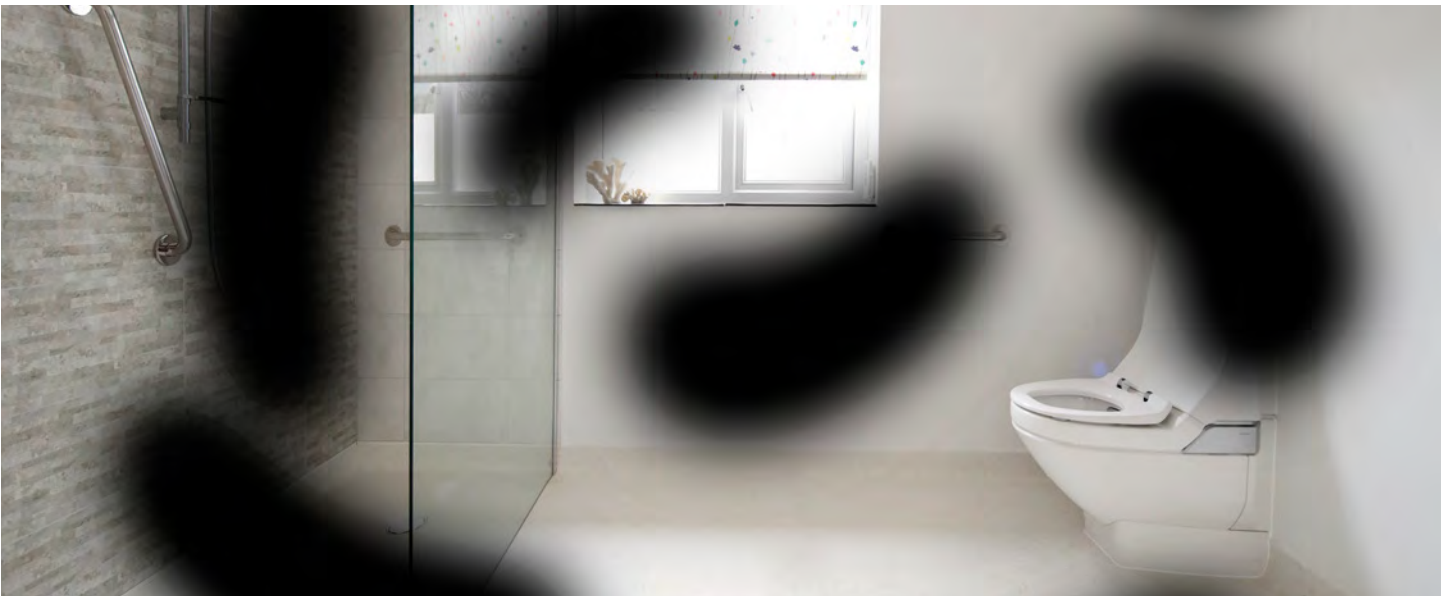
Peripheral field loss



Cataracts/blurry vision



Diabetic retinopathy





## Color and pattern

In creating functional spaces for aging residents, designers need to understand vision changes. Although this adds complexity to color and pattern selection, certain overriding principles still remain:

- Brighter colors may be used to emphasize more important areas of a room, supported by color contrast and additional light.
- Color can encourage or discourage movement into certain areas.
- Color may be incorporated into wayfinding and orientation.
- Color can be used on the walls in stairwells, corridors, and bathrooms to contrast with handrails and help with navigation.
- Avoid sparkles or speckling, as these can cause distraction or look like something to pick up, which could result in a fall.
- Avoid high gloss surfaces. Facility Guidelines Institute (FGI) Guidelines state: "Use of non-glare finished floors should be considered to avoid compromising vision and potentially disrupting balance of residents."
- FGI Guidelines state: "To prevent falls, flooring should have no pattern or a small pattern less than 1" wide or a large pattern wider than 6". Flooring should have low-contrast patterns."
- FGI Guidelines for Walls: Wall surfaces shall have a matte finish. Use of highly polished, glossy, or shiny wall finishes that create glare shall not be permitted.





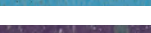
## Design considerations

In healthcare, evidence-based design is a field of study that deals with how the environment can influence a person's well-being. It is believed that this kind of design can make a real difference for people as they age, removing some of the stress, frustration and confusion from everyday living.

Designers are taking the results of these studies and applying them into their designs in order to achieve similar outcomes. Design choices, such as flooring color or location of a sink, can lead to achieving a measurable goal of reducing disorientation, loss of balance and the risk of falling.

### Colors and what they mean

Color can also play a role in the well-being of a resident; it has an effect on the nervous system that can alter psychology and physiology. Different effects can be accomplished with color and each color expresses its own unique qualities.

	Neutrals – Clean, pure, restful, and non-invasive.
	Earth tones (gray, brown, beige) – Stability, approachable, warm, and soothing.
	Red – Bold, releases adrenaline, elevates blood pressure and heart rate.
	Pink – Soothing, affectionate, happiness, and energy. Can reduce erratic behavior.
	Orange – Energy, warmth, and joy.
	Yellow – Alertness and optimism. It can also cause eye fatigue.
	Green – Balance, restful, healing, and nature.
	Turquoise – Refreshing, relaxing, and invigorating.
	Blue – Calming, lowers blood pressure and heart rate.
	Purple – Promotes creativity, spirituality, and perception.

Source: [“Color and emotions – Psychological impact of colors on human behavior” from The Wellness Corner](#)



### Backsplash

Provides high contrast visibility and protects drywall from water

## Contrast and LRVs

It's not enough to consider color alone when differentiating between areas. When the contrast level between floors, walls, steps and doorways is too subtle, it can cause enough uncertainty to result in a fall.

Although contrasting colors create visual changes that help differentiate space, it is actually the amount of light reflected from surfaces that is the main factor in determining a person's ability to identify different surfaces.

Contrasting stair nosing combined with quality safety flooring reduces the risk of slips and trips on stairs. Use contrasting colors or a stripe at the top and bottom of stairways to indicate the final step.

### LRVs

Light Reflectance Values (LRVs) are the best way to measure contrast. Every material has an LRV marked on a scale of 1-100 — 1 being dark (absorbing light), and 100 being light (reflecting light).

To meet requirements set by the FGI Guidelines, there should be at least a 30 point variance in LRVs between adjacent surfaces such as floors and walls.

Conversely, where different types of flooring are used alongside each other and there is no step between them, it's equally important to ensure that the LRVs of the materials are 10 point variance or less to avoid creating the illusion of a step where there is none.



**Walls**

Altro Whiterock 32

LRV 70

**Focus point**

Darker color creates a focal point and gives high contrast to fixtures

**Encourage movement**

Use bright colors to encourage movement toward the color

**Door wainscoting and corner protection**

Altro Whiterock protects doors and corners from bumps and dings

**Chairs**

Chair color contrasts from the wall and floor color

**Darker areas**

Can discourage foot traffic around a particular area or create a visual pathway.

**Hand rails**

Hand rails contrast from the wall.

**Flooring**

Altro Wood Farmhouse Oak

LRV 38

**Coordinate**

Use a coordinating, non-wood visual, with a similar LRV, rather than coving a wood-look flooring up the wall.

## Key performance characteristics

### Durability

Altro flooring is extremely durable. Its indentation resistance and surface abrasion results enable the flooring to resist scuffing and other damage caused by wheelchairs, heavy equipment, walking sticks or other walking aids.

Altro Whiterock wall cladding is highly impact-resistant and known to withstand damage normally caused by wheelchairs and equipment being moved within a home.

Commercial warranties of up to 20 years attest to the durability of Altro flooring and wall cladding.



### Cleanability

Residents living in care communities are already at a higher risk than the rest of the population of contracting an infection due to age and increased vulnerability to illness. Therefore, it is necessary to maintain a clean and healthy indoor environment to ensure a high quality of life for residents and peace of mind for their loved ones. To meet requirements set by the FGI Guidelines:

- Surfaces need to be water-resistant and easily cleanable.
- Flooring should remain intact, safe, and functional in heavy weight-bearing, high-traffic, and impact-susceptible areas.
- Water-resistant materials, sealed-seam construction methods, and moisture-impervious surface selections should be used for any wet areas.
- All areas subject to wet cleaning methods should have heat-welded seams with flash-coved flooring
- The floors and wall-bases of kitchens and other areas subject to wet-cleaning methods shall be constructed of materials that are not physically affected by germicidal or other types of cleaning solutions.
- Altro products are 100% adhered to substrates and have water-tight seams and terminations – water cannot get under flooring or behind the wall panels.
- Altro floors and walls can be power-washed.
- Water-tight and impermeable surfaces keep spills and soil on the surface.
- Our proprietary cleaning technology, Altro Easyclean, is great for overall stain resistance and cleanability. It outperforms other leading commercial flooring in side-by-side tests. It also offers a lasting, attractive appearance and savings over floors not treated with Altro Easyclean.

---

## Safety

As mentioned in some of the earlier sections, the FGI Guidelines for Residential Health, Care, and Support Facilities go into considerable detail on requirements to prevent falls:

- To prevent falls, flooring should have no pattern or a small pattern less than 1" wide or a large pattern wider than 6." Flooring should have low-contrast patterns.
- Use of flooring material that is flexible and "gives" should be reviewed to reduce severity of injury to residents who fall.
- Use of non-glare finished floors should be considered to avoid compromising vision and potentially disrupting balance of residents.
- Flooring surfaces shall provide smooth transitions between different flooring materials. Anything more than 1/8" may be considered a tripping hazard.
- Appropriate level of slip-resistant flooring required in bathing areas, ramps, and entries.
- Slip-resistant flooring with all joints sealed is required in kitchens.

## Sustainability

When choosing products to install inside a building, indoor air quality is a big factor. This is because people spend up to 90% of their time indoors and are far more likely to be affected by pollutants inside than out.

VOCs are organic compounds that are released into the atmosphere by some substances and products. It's thought that exposure to VOCs can cause problems like sick building syndrome, diminished learning in schools, and reduced productivity in offices.

Altro safety flooring has undergone rigorous external VOC testing. It's compliant with national and international indoor air quality schemes including FloorScore, which is with Leadership in Energy and Environmental Design (LEED) in North America. All of our safety flooring and Altro Whiterock wall cladding are compliant. In fact, VOC emissions for Altro Whiterock are below detectable limits.

Our safety and slip-resistant flooring ranges exceed international safety and hygiene standards and offer sustained slip resistance for the life of the product.



# Safety, slip-resistant or smooth?

By choosing wisely, you can reduce the risks of slips and falls as much as 1-in-a-million.

Risk of slips	Altro R12   PTV ≥55 (Altro Stronghold 30)	Altro R11   PTV ≥45 (Altro Aquarius + Altro Classic 25)	Altro R10   PTV ≥36 (Slip-resistant floorings)
Water	1-in-a-million	1-in-a-million	1-in-a-million
Vegetable oil	1-in-a-million	1-in-100,000	1-in-20
Greasy water	1-in-a-million	1-in-100,000	1-in-20
Shower gel	1-in-a-million	1-in-a-million	1-in-20
Shampoo	1-in-a-million	1-in-a-million	1-in-20
Conditioner	1-in-a-million	1-in-a-million	1-in-20
Milk	1-in-a-million	1-in-a-million	1-in-a-million
Flour	1-in-a-million	1-in-a-million	1-in-a-million

## How slip resistance is measured

As the inventor of safety flooring, we take slip resistance seriously. All of our ranges are rigorously tested using multiple techniques that comply with global standards.

### **R<sub>10</sub>** Ramp Test (DIN 51130)

This standard uses test subjects who walk on an angled ramp in a controlled manner over a flooring sample contaminated with water, oil, or other liquids. Results are achieved when the test subject loses balance and falls and are classified on a numbered scale.

### **PTV ≥36** TRRL Pendulum Test (BS7976)

The pendulum test is the only test standard that is portable, allowing for on-site tests. The test incorporates a rubber shoe heel which sweeps over a set of flooring in a controlled manner and produces a pendulum value measuring the potential to slip.

### **.88D 1.03W** Static Coefficient of Friction (ASTM D2047)

This test measures the friction created when a small weighted sled is pulled over the flooring.

### **.65 DCoF** Dynamic Coefficient of Friction (ANSI/NFSI B101.3)

Testing for the Dynamic Coefficient of Friction (DCoF) is conducted through the use of a Digital Tribometer.

## Altro flooring is suitable for many commercial areas, but how do you know which floorings are best?

It is the designers', specifiers' and end-users' responsibility to ensure flooring is fit for purpose and it's part of our role at Altro to help make this process easy. Our flooring is separated into three categories: safety, slip-resistant and smooth. These categories have been created to help assist you in specifying the floor that is right for the application type and any contaminants that may be present on a regular basis.

### Are contaminants present?

Areas that commonly see many contaminants such as oils, body fats, soap scum, soaps, grease, or constant spillages of water require extra care when selecting flooring. We recommend Altro safety flooring that meets R12 or R11 levels of slip resistance for these areas. General use areas that are not riddled with contaminants will be secure with our slip-resistant or smooth offerings.

### Selecting the right degree of slip resistance

It is important that the right amount of slip resistance be selected. Too little can result in slips and falls but too much slip resistance can be harmful and may impede movement, especially to those with reduced ambulatory ability.

## Slips and falls

Slips and falls are a serious issue for both care givers and residents:

- Falls account for 25% of all injuries among residents 65 years and over — in some regions, as high as 50%.
- One third of community-dwelling seniors experience one fall each year and half of those will fall more than once.
- Among seniors, 20% of deaths related to injury can be traced back to a fall.
- One in every three serious bone injuries in older adults result in death within one year of the incident.

## Slip resistance

Falls occur when body movement shifts the body off the center of balance.

- Slips: too little friction between footwear and walking surface.
- Safety + slip-resistant flooring, from Altro, delivers slip resistance values well above industry standards. Unlike other safety floors, our slip-resistant aggregate is found throughout the thickness of the floor, ensuring slip resistance for the life of the product.
- Trips: foot collides with an object. Any unevenness greater than 1/8" may be a tripping hazard for a resident.

Our flooring has varying degrees of slip resistance to ensure that flooring installed allows for changes in footfall patterns while still allowing for increased traction or grip between the foot (shoe sole or barefoot), cane, crutch, walker or wheelchair and the floor surface.



Altro has carefully recommended flooring options that offer the right amount of slip resistance for specific areas in senior living communities.

# Sample household floor plan

**Staff office**  
Altro Orchestra

**Storage pantry**  
Altro Symphonia

**Commercial kitchen**  
Altro Classic 25

← To other community areas  
+ commercial kitchen

**Salon**  
Altro Wood

**Spa and/or  
assisted bathing**  
Altro Aquarius

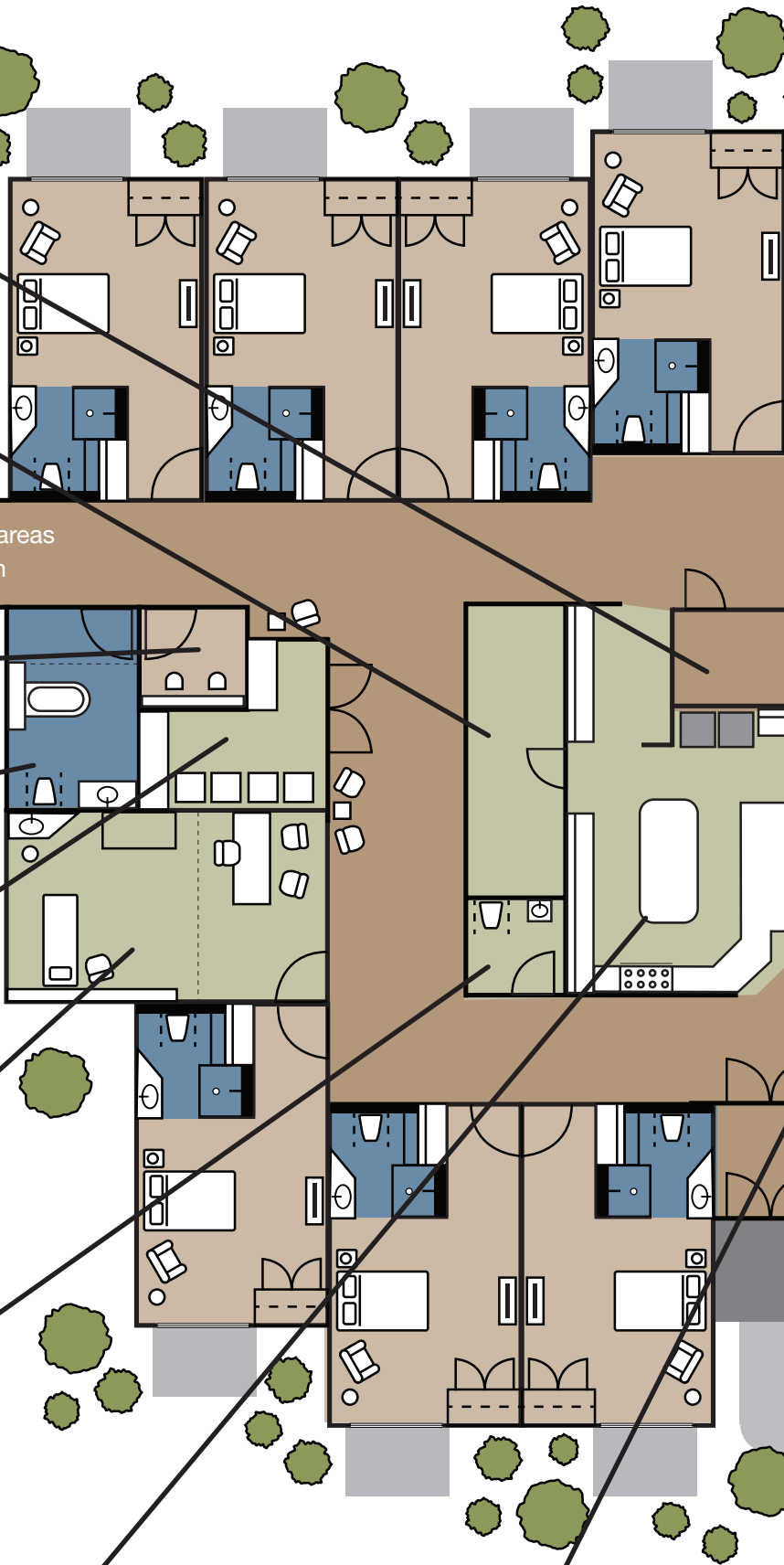
**Self-serve  
laundry**  
Altro Walkway 20

**Medical office**  
Altro Symphonia

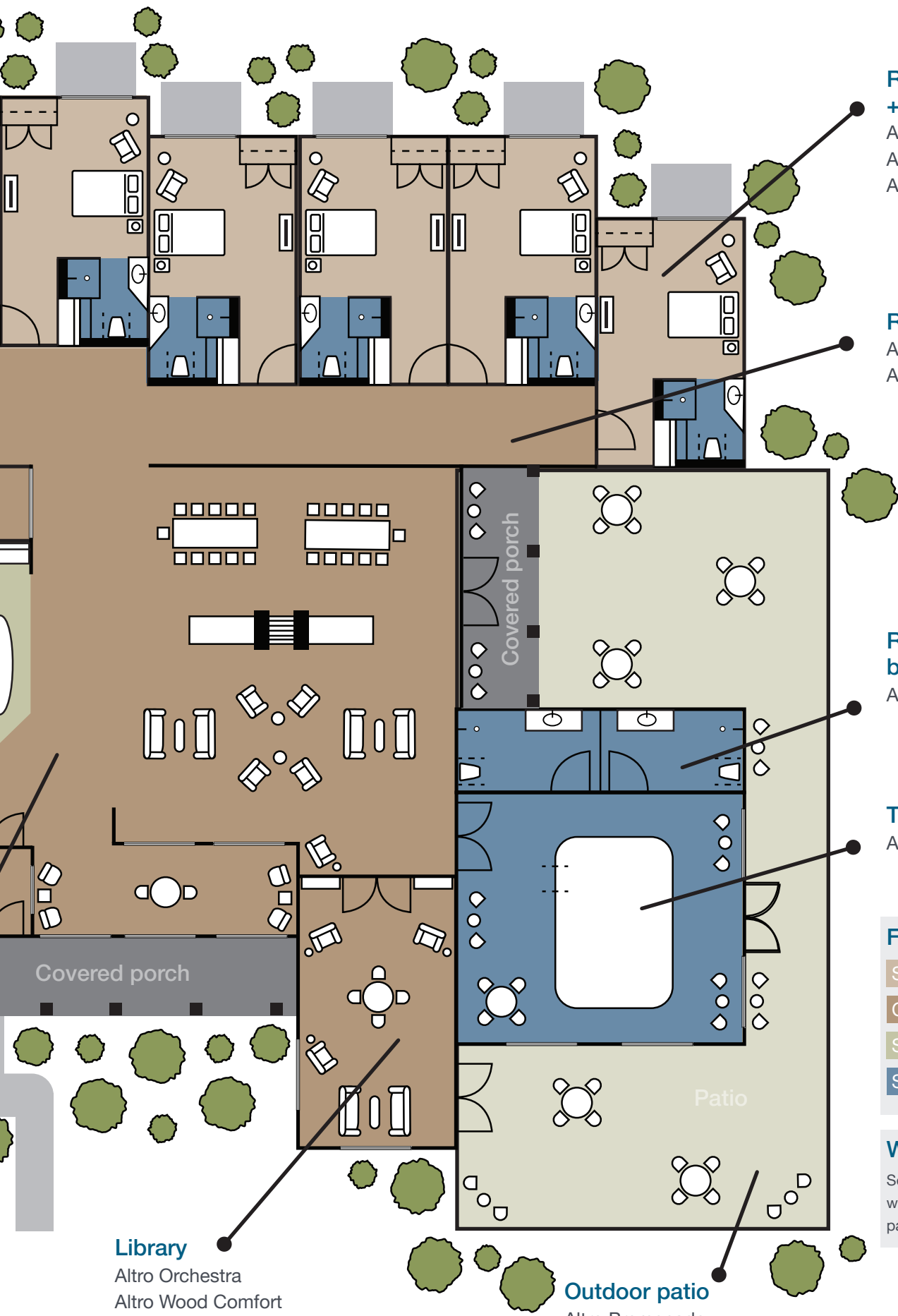
**Restroom**  
Altro Symphonia

**Residential  
kitchen**  
Altro Symphonia

**Common areas**  
Altro Orchestra  
Altro Wood Comfort







**Resident suites + barrier-free shower**

Altro Lavencia  
 Altro Wood  
 Altro Aquarius (restroom)

**Resident corridors**

Altro Orchestra  
 Altro Wood Comfort

**Restroom with barrier-free shower**

Altro Aquarius

**Thermal suite**

Altro Aquarius

**Flooring key**

- Smooth sheet / LVT
- Comfort sheet
- Slip-resistant sheet
- Safety sheet

**Wall cladding**

See recommendations for walls by area type on the pages following this map.

**Library**

Altro Orchestra  
 Altro Wood Comfort

**Outdoor patio**

Altro Promenade



---

## Levels of care

Distinguishing between the different levels of senior care can be confusing. Residents' levels of independence, mobility, and fragility in a community can vary greatly. With home care services expanding, the demographics within independent living, assisted living and long term care/skilled nursing communities are becoming harder to anticipate.

When recommending “fit for purpose” products, according to resident fragility and required care, the following will serve as general guidelines:

### Independent Living

Residents live in their own private dwelling spaces and have access to common areas where they can gather with other members of the community.

Considerations: aesthetics, slip resistance and adaptability.

### Assisted Living

Assisted living communities offer help with some activities of daily living. It could be as simple as cooking, personal hygiene or medication assistance. There is an increased level of resident fragility – declines in visual and auditory acuity as well as muscle weakness and pain. As a result, there is an increased need for walking aids and wheels chairs, assisted baths/showers and increased acoustical absorption.

Considerations: aesthetics, acoustics, high traffic durability, impact resistance, and slip resistance.

### Long term care/skilled nursing/memory care

Skilled nursing homes provide on site, 24/7 custodial and medical care. There is a high level of increased wear and tear from wheelchairs, medical carts, resident beds, lifts etc., as well as an increase in wet cleaning methods with chemical disinfection. Slip resistance becomes critical in areas like bathrooms and assisted showers/baths.

Considerations: aesthetics, acoustics, high traffic durability, impact resistance, slip resistance, hygiene and cleanability / chemical resistance.

# Entrances, corridors and common spaces

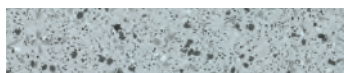
First impressions count - as well as welcoming guests and residents, these high traffic areas need flooring and wall finishes that will endure everything from walking aids to rolling carts. However, it's not just durability – the right finishes are critical for visual impact and way-finding.

## Considerations

- Attractive, warm and welcoming
- High traffic durability
- Rolling carts and wheelchairs
- Water and snow brought in from shoes

## FGI Guidelines

- Flooring surfaces shall allow for ease of ambulation and self-propulsion.
- Flooring surfaces shall allow easy movement of all wheeled equipment used in the facility.
- Flooring surfaces shall be stable, firm and slip-resistant.



**Altro XpressLay** *Sheet goods*



**Altro Wood adhesive-free** *Sheet goods*



**Altro Cantata** *Sheet goods*

## Suggestions by level of care

### Independent living



**Altro Lavencia** *LVT / LVP*



**Altro Whiterock wall designs** *Decorative walls*

### Assisted living and memory care



**Altro Lavencia** *LVT / LVP*



**Altro Whiterock wall designs** *Decorative walls*



**Altro Orchestra** *Sheet goods*



**Altro Whiterock PopArt** *Custom printed walls*



**Altro Wood Collection** *Sheet goods*



**Altro Fortis Titanium 15** *Wall covering*

### Skilled nursing and long-term care



**Altro Wood Collection** *Sheet goods*



**Altro Whiterock wall designs** *Decorative walls*



**Altro Whiterock Matte** *Wall protection*

Adhesive-free options can be installed over existing floors and are ideal for projects involving issues with substrate moisture or tight construction deadlines.



# Dining rooms

The atmosphere of a community is often created in the areas where residents gather and interact. Because the meal time experience can be one of the most exciting parts of a day for a resident, dining areas are a key part, if not the center, of a community.

Materials that are beautiful, durable and easy to maintain are paramount in creating a warm, welcoming gathering space.

## Considerations

- High traffic durability
- Rolling carts and wheelchairs
- Scratch resistance

## FGI Guidelines

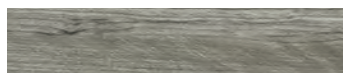
- Flooring surfaces shall allow for ease of ambulation and self-propulsion.
- Flooring surfaces shall allow easy movement of all wheeled equipment used in the facility.
- Flooring surfaces shall be stable, firm and slip-resistant.

Adhesive-free options can be installed over existing floors and are ideal for projects involving issues with substrate moisture or tight construction deadlines.



**Altro Cantata**

*Sheet goods*



**Altro Wood adhesive-free**

*Sheet goods*

## Suggestions by level of care

### Independent living



**Altro Lavencia**

*LVT / LVP*



**Altro Whiterock wall designs**

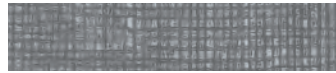
*Decorative walls*



**Altro Tegulis**

*Etched, tile-like walls*

### Assisted living and memory care



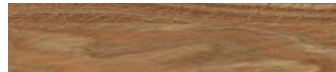
**Altro Orchestra + Altro Serenade**

*Sheet goods*



**Altro Whiterock wall designs**

*Decorative walls*



**Altro Wood Collection**

*Sheet goods*



**Altro Tegulis**

*Etched, tile-like walls*

### Skilled nursing and long-term care



**Altro Orchestra + Altro Serenade**

*Sheet goods*



**Altro Whiterock wall designs**

*Decorative walls*



**Altro Wood Collection**

*Sheet goods*



**Altro Whiterock Matte**

*Wall protection*



**Altro Tegulis**

*Etched, tile-like walls*



**Altro Fortis Titanium 15**

*Wall covering*



# Household kitchens, kitchenettes and serveries

In spaces where the kitchen and dining area share the same room, or if residents have a lounge area with sinks and appliances. Less industrial-looking, but still slip-resistant flooring is necessary.

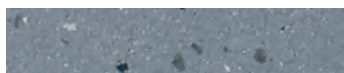
## Considerations

- Cleanability and hygiene
- Contaminants may be present
- Appropriate levels of slip resistance

## FGI Guidelines

- Floors in areas used for food preparation and assembly shall be water-resistant
- Floor surfaces, including tile joints, shall be resistant to food acids
- Floor construction in dietary and food preparation areas shall be free of spaces that can harbor pests. All joints shall be sealed
- Slip-resistant flooring products shall be used throughout kitchens, including wet areas

Adhesive-free options can be installed over existing floors and are ideal for projects involving issues with substrate moisture or tight construction deadlines.



**Altro XpressLay** *Sheet goods*



**Altro Wood adhesive-free** *Sheet goods*



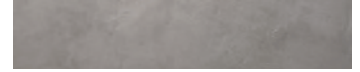
**Altro Cantata** *Sheet goods*

## Suggestions by level of care

### Independent living



**Altro Lavencia** *LVT / LVP*



**Altro Whiterock wall designs** *Decorative walls*



**Altro Orchestra** *Sheet goods*



**Altro Tegulis** *Etched, tile-like walls*



**Altro Wood Comfort** *Sheet goods*

### Assisted living and memory care



**Altro Orchestra + Altro Operetta** *Sheet goods*



**Altro Whiterock wall designs** *Decorative walls*



**Altro Symphonia** *Sheet goods*



**Altro Whiterock Matte** *Wall protection*



**Altro Wood Comfort** *Sheet goods*



**Altro Tegulis** *Etched, tile-like walls*

### Skilled nursing and long-term care



**Altro Symphonia** *Sheet goods*



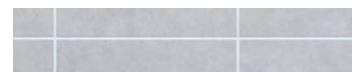
**Altro Whiterock wall designs** *Decorative walls*



**Altro Walkway 20** *Sheet goods*



**Altro Whiterock Matte** *Wall protection*



**Altro Tegulis** *Etched, tile-like walls*





# Resident rooms

To keep people safe without compromising the look and feel of their home environment, our products are available in a wide range of colors and designs, so there's something to suit practically every taste and décor. Our products help create a soothing home-like environment and are easily cleaned, highly durable and provide safety under foot (to help prevent slip and fall incidents).

## Considerations

- Shuffling feet
- Comfort
- Home-like environment
- Cleanability

## FGI Guidelines

- Flooring surfaces shall allow for ease of ambulation and self-propulsion.
- Flooring surfaces shall allow easy movement of all wheeled equipment used in the facility.
- Flooring surfaces shall be stable, firm and slip-resistant.
- Flooring should reduce fatigue and musculoskeletal injury.
- The ability of a flooring material to attenuate noise should also be considered.

Adhesive-free options can be installed over existing floors and are ideal for projects involving issues with substrate moisture or tight construction deadlines.



**Altro Cantata**

*Sheet goods*

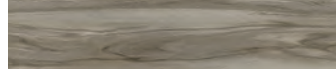


**Altro Wood adhesive-free**

*Sheet goods*

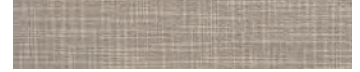
## Suggestions by level of care

### Independent living



**Altro Lavencia**

*LVT / LVP*



**Altro Whiterock wall designs**

*Decorative walls*

### Assisted living and memory care



**Altro Orchestra + Altro Serenade**

*Sheet goods*



**Altro Whiterock wall designs**

*Decorative walls*



**Altro Wood Collection**

*Sheet goods*

### Skilled nursing and long-term care



**Altro Orchestra + Altro Operetta**

*Sheet goods*



**Altro Whiterock wall designs**

*Decorative walls*



**Altro Wood Collection**

*Sheet goods*



# Resident bathrooms

These areas also need to be easy to clean and durable enough to handle the community's recommended cleaning regime. FGI Guidelines require that floors and wall bases of any wet areas shall be constructed of materials that are not physically affected by germicidal or other types of cleaning solutions. They must also have sealed joints and if coved they should be continuous and sealed to the wall without voids.

## Considerations

- Contaminants may be present
- Cleanability and hygiene

## FGI Guidelines

- Floor and wall bases shall be constructed of materials that are not affected by germicidal cleaning solutions.
- Floor and wall bases must have sealed joints.
- Coved flooring must be continuous and sealed to the wall without voids.
- Flush transition between bathroom floor and shower.
- Floor must slope toward drain.
- Flooring must have appropriate slip resistance.

## Suggestions by level of care

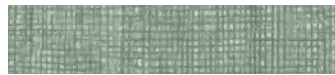
### Independent living



Altro Lavencia *LVT / LVP*



Altro Whiterock wall designs *Decorative walls*



Altro Orchestra *Sheet goods*



Altro Tegulis *Etched, tile-like walls*

### Assisted living and memory care



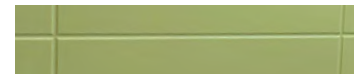
Altro Symphonia *Sheet goods*



Altro Whiterock wall designs *Decorative walls*



Altro Wood Comfort *Sheet goods*



Altro Tegulis *Etched, tile-like walls*

### Skilled nursing and long-term care



Altro Symphonia *Sheet goods*



Altro Whiterock wall designs *Decorative walls*



Altro Walkway 20 *Sheet goods*



Altro Tegulis *Etched, tile-like walls*

Adhesive-free options can be installed over existing floors and are ideal for projects involving issues with substrate moisture or tight construction deadlines.



Altro XpressLay

*Sheet goods*



Altro Cantata

*Sheet goods*



# Showers, spas and wet areas

FGI Guidelines state that the slip resistance ratings of flooring surfaces shall be appropriate for the areas of use, especially important for wet environments. It also states that slip-resistant flooring products shall be used for surfaces in bathing areas and wet areas.

What's more, you must consider the types of foot traffic in these areas. In modern senior living communities, both barefoot and sole shoed traffic is to be expected; therefore the flooring specified should work to protect both the resident and care provider.

Altro Aquarius, an award-winning safety flooring innovation, is great for areas that receive both barefoot and shoe traffic. Its unique texture affords slip-resistant DCoF rating .65 and SCoF ratings of .88 Dry and 1.03 Wet, allowing for maximum traction regardless of the type of traffic.

## Considerations

- Accommodate barefoot and shoe traffic
- Contaminants like water, soap and conditioners are always present - additional levels of slip resistance is important.
- Cleanability and hygiene

## FGI Guidelines

- Slip-resistant flooring must be used in bathing areas.
- Floor and wall bases shall be constructed of materials that are not affected by germicidal cleaning solutions.
- Floor and wall bases must have sealed joints.
- Coved flooring must be continuous and sealed to the wall without voids.
- Flush transition between bathroom floor and shower.
- Floor must slope toward drain.

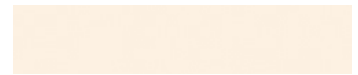
## Suggestions for all levels of care



Altro Aquarius *Sheet goods*



Altro Whiterock *Decorative walls*  
wall designs



Altro Whiterock *Wall protection*  
Matte



Altro Tegulis *Etched, tile-like walls*

Learn more in our detailing guide for wet environments.





# Commercial kitchens

In environments where wet and greasy are typical floor conditions, slip and fall accidents can be both common and costly. It is the owner's responsibility to ensure the safety of all those sharing the space.

A safe kitchen begins with the floor. Installing safety flooring can make slip and fall accidents one of the kitchen's least concerns. Altro safety flooring is built for busy, industrial kitchens, and reduces the risk of a slip and fall to one in a million.

While a chipped or damaged wall may not look concerning, bacteria can harbor in its cracks. Durable, non-absorbent and easy-to-clean walls are necessary to protect against mold and germs.

Not all kitchens are created equal, and not every space requires the most slip-resistant flooring. However, a degree of slip resistance is required, even in these less-busy environments, to ensure safe working conditions.

## Considerations

- Integrated floor to wall system
- Busy foot traffic
- Slip and fall accidents
- Carts and other rolling loads
- Comfort underfoot
- Cleanability and hygiene

## FGI Guidelines

- Floors in areas used for food preparation and assembly shall be water-resistant.
- Floor surfaces, including tile joints, shall be resistant to food acids.
- Floor construction in dietary and food preparation areas shall be free of spaces that can harbor pests. All joints shall be sealed.
- Slip-resistant flooring products shall be used throughout kitchens, including wet areas.
- Walls shall be non-absorbent, smooth, easily cleaned, and light in color.
- Walls adjacent to cooking equipment shall have sealed surfaces that are cleanable and made of non-combustible materials.

## Suggestions by level of use

### Heavy duty commercial kitchens



Altro Stronghold 30 *Sheet goods*



Altro Whiterock *Wall cladding*



Altro Puraguard *Wall protection*

### Medium to light duty kitchens



Altro Classic 25 *Sheet goods*



Altro Whiterock *Wall cladding*



Altro Puraguard *Wall protection*

For more information see our Commercial Kitchens brochure.







# Back-of-house areas

When it comes to areas that need rugged, hardwearing flooring and wall protection, Altro safety flooring and Altro Puraguard are the perfect choice. Altro traditional safety flooring is engineered with quartz, silicon carbide and aluminum trioxide for long-term durability and slip resistance. Designed for low maintenance, it incorporates Altro Easyclean™ for a lasting attractive appearance and savings in time and cleaning costs.

Altro Puraguard is highly impact-resistant and known to withstand damage normally caused by laundry carts, food wagons and maintenance equipment.

## Considerations

- Heavy rolling loads
- Impact-resistant walls
- Heavy equipment present
- Durability
- Water and moisture present

## FGI Guidelines

- Flooring should remain intact, safe, and functional in heavy weight-bearing, high-traffic, and impact-susceptible areas
- All areas subject to wet cleaning methods should have heat-welded seams with flash-coved flooring
- Water-resistant materials, sealed-seam construction methods, and moisture-impervious surface selections should be used for any wet areas
- Wall finishes near plumbing fixtures shall be washable, smooth, scrubbable, and moisture-resistant.

## Suggestions by level of use

### Heavy duty



Altro Reliance 25 *Sheet goods*



Altro Whiterock *Wall cladding*



Altro Fortis  
Titanium 15 *Wall covering*

### Medium duty



Altro Walkway 20 *Sheet goods*



Altro Whiterock *Wall cladding*



Altro Puraguard *Wall protection*



Altro Fortis  
Titanium 15 *Wall covering*

## Additional locations to consider Altro products



Indoor hydrotherapy pool



Fitness center



Salon



Cafe



Medical clinics



Convenience store



Outdoor spaces



Theatre



Administration



Four more information  
on each product please  
visit [altro.com](http://altro.com)

## Cleaning

Proper cleaning is essential to keeping a facility hygienic no matter which interior finishes are selected. We highly recommend that a cleaning and sanitizing program is created specific to your facility that utilizes the resources and products as recommend by individual manufacturers.

Our cleaning guidelines are available at [altro.com](https://www.altro.com)

## Samples

Altro recommends that color selection is never made through printed or digital materials. Please order a physical sample for color and pattern approval before placing your order with us.

Order samples 24 hours a day at [altro.com](https://www.altro.com) or find us on Material Bank.



Follow us



📞 **USA** 800 377 5597

📞 **CANADA** 800 565 4658

✉️ [support@altro.com](mailto:support@altro.com)

🌐 [www.altro.com](https://www.altro.com)

Content was correct at time of print. Altro reserves the right to change any detail. Please consult [www.altro.com](https://www.altro.com) or your local Sales Representative for the latest product information.