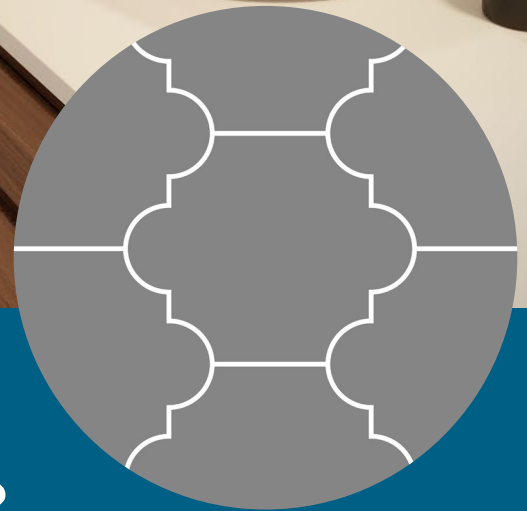




altro

Designed for possibilities.  
Made for people.



# Altro Tegulis™

## What aesthetic will you create?

Fully customizable, hygienic wall panels in chic tile designs

Palermo pattern  
shown in photo  
(mirror wall)

## Altro Tegulis

For a sophisticated space, effortlessly create your own style with Altro Tegulis – the modern alternative to traditional tile walls. With a broad palette of colors and designs to choose from, it's the perfect way to elevate any environment.

Combining the chic look of tile with custom-etched faux grout lines, Altro Tegulis offers a hygienic, low-maintenance solution. Say goodbye to the cleaning and repair headaches of traditional tiles. The robust PVC construction prevents water and bacteria from penetrating below the surface, allowing for thorough cleaning and disinfection with ease.

Altro Tegulis is fully customizable, allowing you to select from our standard range of designs or even specify a unique custom design tailored to your installation. And the customization doesn't stop there – you can choose from three unique joining methods: half-lap, interlocking, or straight edge. This flexibility ensures that Altro Tegulis can be used in a variety of spaces, including wet environments like showers and tub surrounds.

Faster to install than ceramic tiles, Altro Tegulis saves you both time and money. Our innovative joining methods make installation simpler and more efficient, delivering excellent results every time.

## Typical applications

Residential healthcare, retail, offices, hospitality, education, student accommodations, leisure, focal walls and wet areas such as shower enclosures, tub surrounds, bathrooms, kitchenettes, spas and back splashes.

## Features + benefits

- Extensive color + pattern palette
- Complete customization available
- Etched grout lines to maintain hygiene
- Well bonded to substrate
- Dry + wet area options
- Non-porous, hydrophobic and resists bacterial growth
- Class A fire rated + CAN/ULC tested
- Low VOCs, lead-free and phthalate-free

2.5mm  
thick

4"  
width

variable  
length

custom  
sizing

panel  
format





Chevron pattern shown in  
Altro Whiterock Standard White



3" x 12" Stacked Tile pattern shown in  
Altro Whiterock wall designs (AWWD) Cool Mineral





Because each order is custom made to your exact specifications, we follow a carefully structured ordering process to ensure everything meets your needs. This process includes order submission with a detailed worksheet, proofing, and collection of a purchase order. For orders under 100 panels, **there is a standard 6-week production window\***. Rest assured, your dedicated sales representative and our project coordinator are here to guide you every step of the way, providing support and assistance throughout the

## Ready to start an order?

The best way to begin your order is by connecting with your local Altro Sales Representative. As product experts, they can guide you through all the details of Altro Tegulis and even submit the worksheet on your behalf.

If you're unsure who your Altro Sales Representative is, simply email [FabProjects@altro.com](mailto:FabProjects@altro.com), and our Project Coordinator will help connect you.

As a secondary option, order worksheets are available on the Altro Tegulis web page for self-service and self-submitting.

## Looking for a sample?

Due to the custom nature of Altro Tegulis, we only stock a small generic selection of samples in our warehouses.

To place an order, select any Altro Tegulis sample on our Altro Tegulis web page and select the color of your choice as well (Altro Whiterock, Altro Whiterock Matte, Altro Whiterock Chameleon, Altro Whiterock wall designs).



**Samples can be ordered 24 hours a day, 7 days a week at [www.altro.com](http://www.altro.com)**



## What size panel?

- 4' x 8'2" (1.22m x 2.5m) nominal\*
- 4' x 9'10" (1.22m x 3m) nominal\*
- Any custom dimension up to 4' x 9'10"

*\* Please note that the exact dimensions of your panels will vary depending on the tile and joining method you select. Some options may result in more waste than others. Larger tiles with interlocking join particularly have the most waste. You will receive a proof sheet with the precise dimensions to assist with your planning.*

## What color panel?

Your Altro Tegulis wall panels can be manufactured with any of the colors from our Altro Whiterock, Altro Whiterock Matte, Altro Whiterock Chameleon or Altro Whiterock wall designs ranges. Please see the color selection on pages 5 - 6 or reference our website.

## Pattern

Choose your pattern from one of our standard looks featured on pages 7 - 15 or get creative and design a pattern of your own!

- |                   |               |                    |                    |
|-------------------|---------------|--------------------|--------------------|
| • Accordion       | • Herringbone | • Square 4" x 4"   | • Subway 4" x 10"  |
| • Chevron         | • Hexagon     | • Square 6" x 6"   | • Subway 12" x 24" |
| • Cortino         | • Palermo     | • Stacked 3" x 12" | • Surfboard        |
| • Deco            | • Picket      | • Stacked 6" x 12" | • Trapezoid        |
| • Diamond 4" x 4" | • Scale       | • Stacked 8" x 12" | • Waves            |
| • Diamond 8" x 8" | • Shiplap     | • Subway 3" x 6"   |                    |
| • Fan             | • Speakeasy   | • Subway 3" x 12"  |                    |

*or your custom pattern!*

## What joining method?

Half-lap, interlock, and straight-edge joining methods are available. The tile pattern you select will determine which joining methods are compatible, though in most cases, you'll have several options. For details on each joining method, please refer to pages 17 - 18. Then, check the tile pattern you've chosen on pages 7 - 15 to confirm which joining methods are available.

*\*The standard production time is 6 weeks, starting once proof approval and the purchase order are received. This timeline may be extended if the selected color is out of stock, if we are at production capacity, or if your order exceeds 100 panels.*

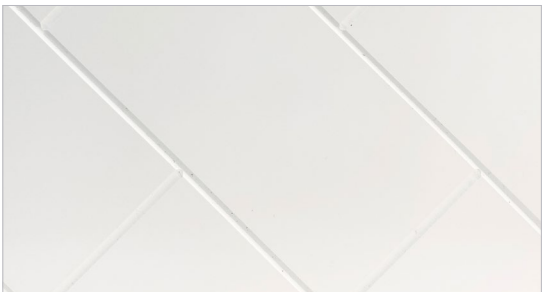
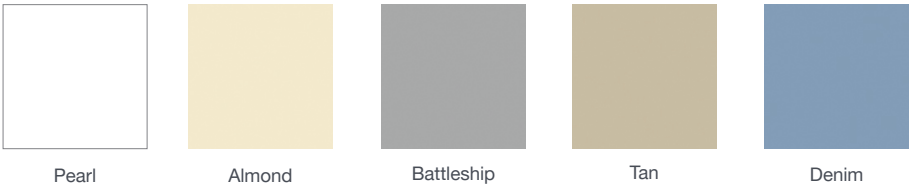
# Satin colors (Altro Whiterock)

A very subtle satin sheen with through color appearance



# Matte colors (Altro Whiterock Matte)

Slightly textured emboss, matte sheen, through color appearance



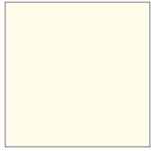
## Appearance example

- Satin/matte finish over entire panel
- Grout is same color as tile

3" x 6" Herringbone pattern shown in  
Altro Whiterock Standard White  
\*Not to scale, depicted tile is 3" x 6" full scale.

## High-gloss colors (Altro Whiterock Chameleon)

Reflective, high-gloss sheen with through color appearance



Pure Innocence



Distant Thunder



Liquorice



Shocking Pink



Feng Shui



Moulin Rouge



Taxi Cab



Eau De Chic



Hawaiian Palm



Sheer Glass



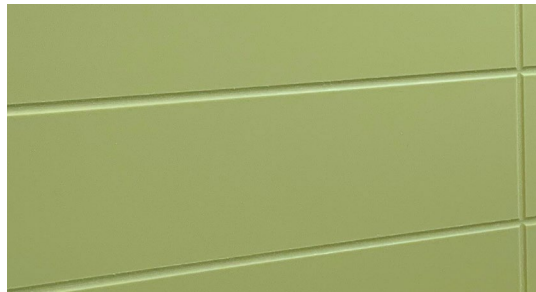
Slip Stream



Nightfall



Juicy Lucy



### Appearance example

- Glossy finish tile
- Grout is matte and can be slightly lighter than tile color

3" x 12" square tile pattern shown in  
Altro Whiterock Chameleon in Eau De Chic  
\*Not to scale, depicted tile is 3" x 12" full scale.

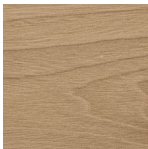
## Patterned looks (Altro Whiterock wall designs)

Patterned appearance, matte sheen with white etched grout lines

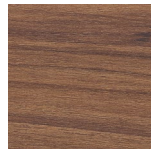
\*Patterns are not shown to scale in this brochure.



Soft Woodgrain



Warm Woodgrain



Rich Woodgrain



White Mineral



Cool Mineral



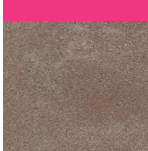
Urban Mineral



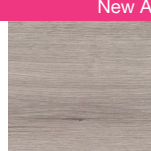
Winter Weave



Autumn Weave



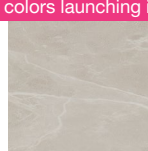
Warm Concrete



Cool Woodgrain



Soft Elegance



Warm Elegance

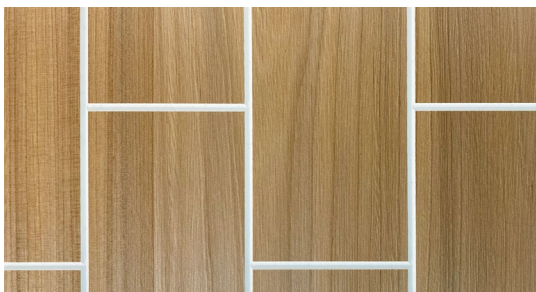


White Elegance



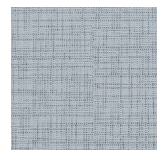
White Woodgrain

New Altro Whiterock wall designs colors launching in May 2025!



### Appearance example

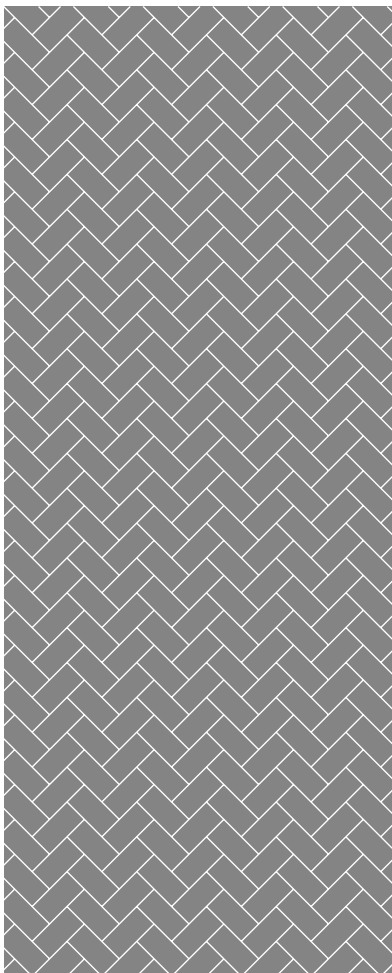
- Patterned tiles
- Grout is white



Summer Weave

3" x 6" subway tile pattern shown in  
AWWD Warm Woodgrain  
\*Not to scale, depicted tile is 3" x 6" full scale.





## Herringbone

Available in the following joining methods:

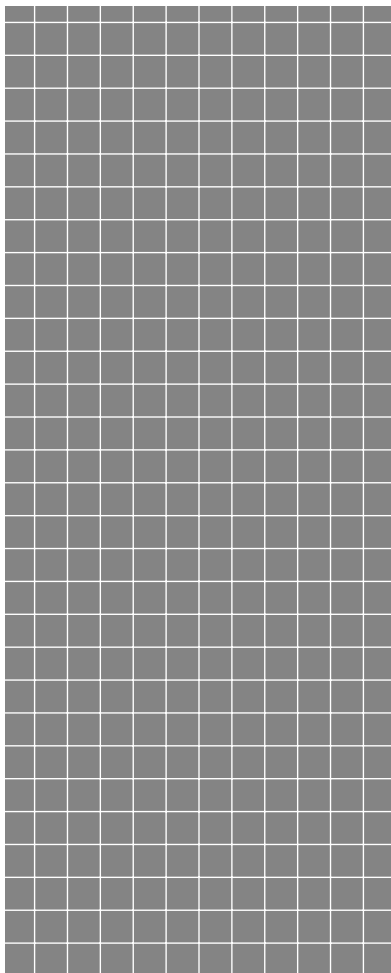
### Wet + dry areas

- ❌ Half-lap concealed 💧
- ✅ Half-lap visible 💧
- ✅ Straight-edge\* 💧

### Dry areas only

- ✅ Interlock

\*Please note butt seam straight-edge panels are not watertight unless combined with correct accessories and installation techniques. Please refer to Altro Tegulis Installation guide.



## Square 4" x 4"

Available in the following joining methods:

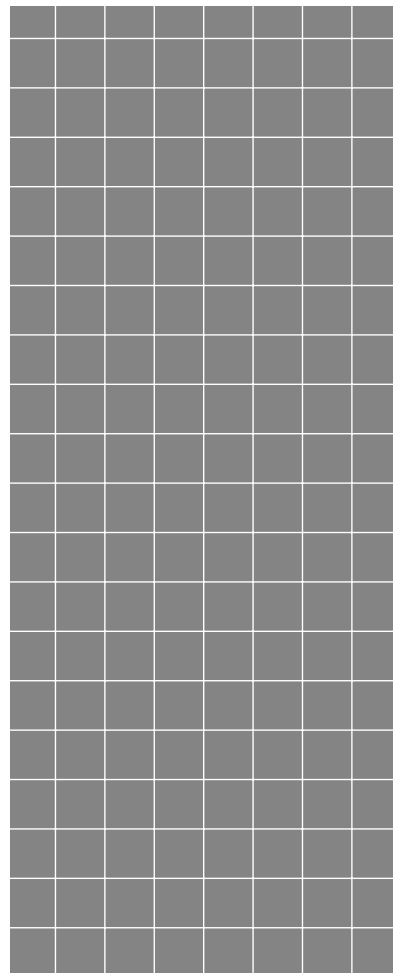
### Wet + dry areas

- ✅ Half-lap concealed 💧
- ❌ Half-lap visible 💧
- ✅ Straight-edge\* 💧

### Dry areas only

- ✅ Interlock

\*Please note butt seam straight-edge panels are not watertight unless combined with correct accessories and installation techniques. Please refer to Altro Tegulis Installation guide.



## Square 6" x 6"

Available in the following joining methods:

### Wet + dry areas

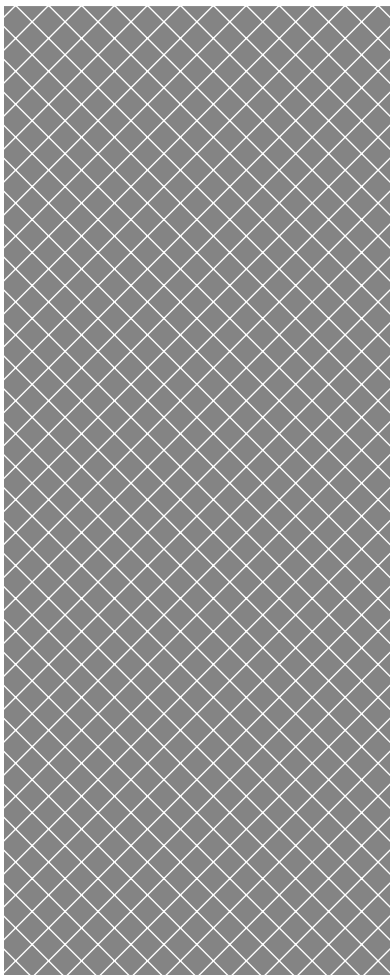
- ✅ Half-lap concealed 💧
- ❌ Half-lap visible 💧
- ✅ Straight-edge\* 💧

### Dry areas only

- ✅ Interlock

\*Please note butt seam straight-edge panels are not watertight unless combined with correct accessories and installation techniques. Please refer to Altro Tegulis Installation guide.

Your pattern and joining method selection could change the final dimension of your panel. Larger tiles with interlocking join typically have the most waste. You will be proofed with the final dimensions of your panels during the proofing process. Because of the custom nature of this product a small overage is suggested when you place your order.



## Diamond 4" x 4"

Available in the following joining methods:

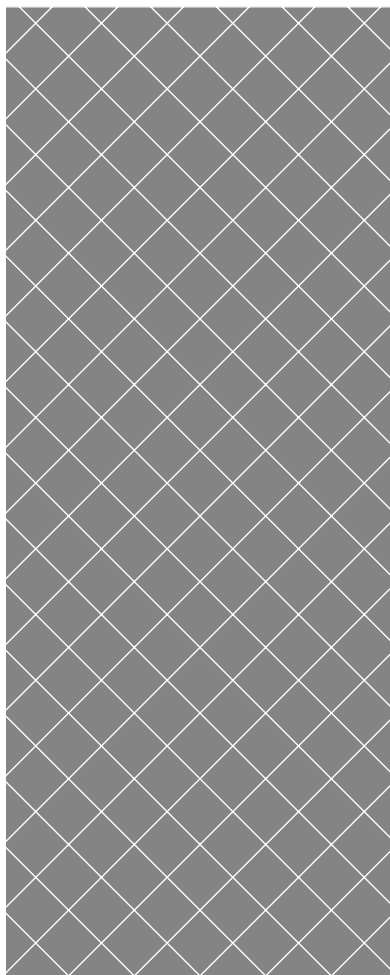
### Wet + dry areas

- ✗ Half-lap concealed 💧
- ✓ Half-lap visible 💧
- ✓ Straight-edge\* 💧

### Dry areas only

- ✓ Interlock

\*Please note butt seam straight-edge panels are not watertight unless combined with correct accessories and installation techniques. Please refer to Altro Tegulis Installation guide.



## Diamond 8" x 8"

Available in the following joining methods:

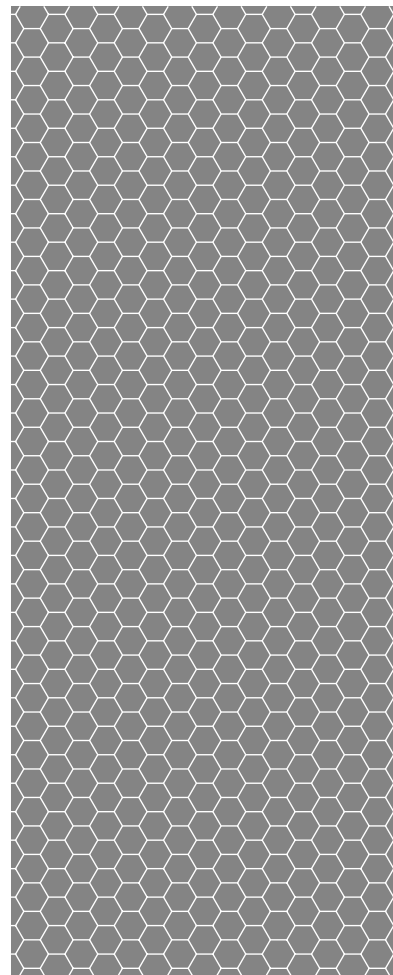
### Wet + dry areas

- ✗ Half-lap concealed 💧
- ✓ Half-lap visible 💧
- ✓ Straight-edge\* 💧

### Dry areas only

- ✓ Interlock

\*Please note butt seam straight-edge panels are not watertight unless combined with correct accessories and installation techniques. Please refer to Altro Tegulis Installation guide.



## Hexagon

Available in the following joining methods:

### Wet + dry areas

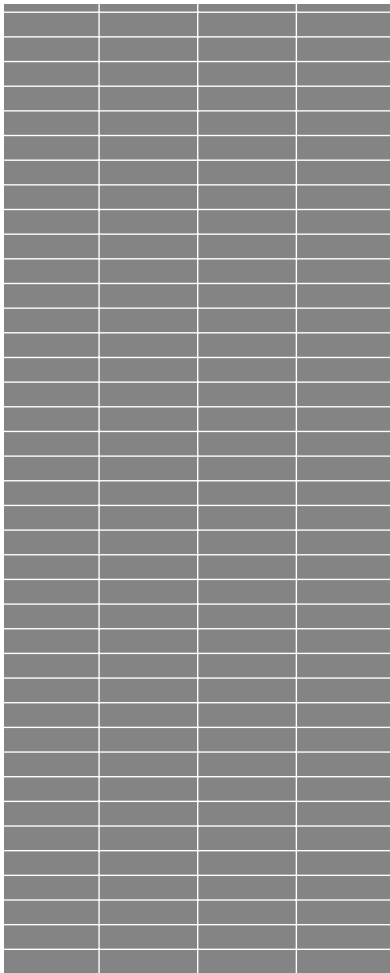
- ✗ Half-lap concealed 💧
- ✓ Half-lap visible 💧
- ✓ Straight-edge\* 💧

### Dry areas only

- ✓ Interlock

\*Please note butt seam straight-edge panels are not watertight unless combined with correct accessories and installation techniques. Please refer to Altro Tegulis Installation guide.

Your pattern and joining method selection could change the final dimension of your panel. Larger tiles with interlocking join typically have the most waste. You will be proofed with the final dimensions of your panels during the proofing process. Because of the custom nature of this product a small overage is suggested when you place your order.



## Stacked Tile 3" x 12"

Available in the following joining methods:

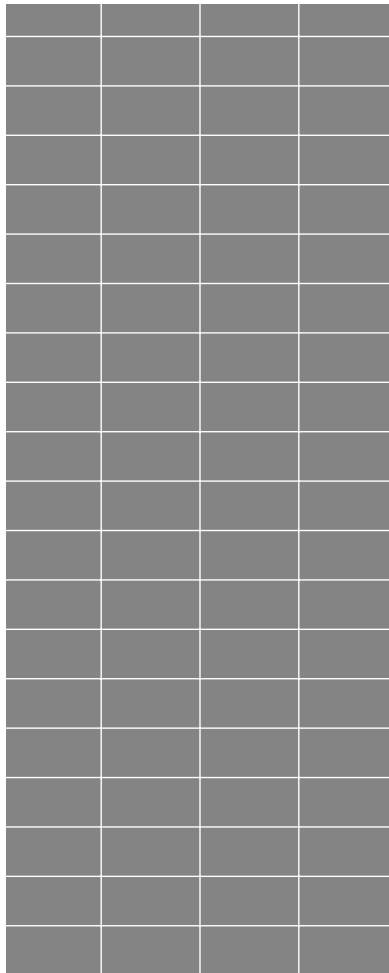
### Wet + dry areas

- ✓ Half-lap concealed 💧
- ✗ Half-lap visible 💧
- ✓ Straight-edge\* 💧

### Dry areas only

- ✗ Interlock

\*Please note butt seam straight-edge panels are not watertight unless combined with correct accessories and installation techniques. Please refer to Altro Tegulis Installation guide.



## Stacked Tile 6" x 12"

Available in the following joining methods:

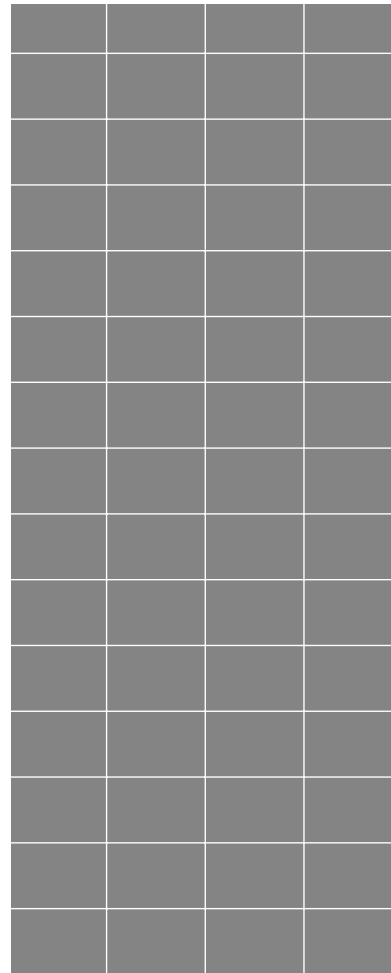
### Wet + dry areas

- ✓ Half-lap concealed 💧
- ✗ Half-lap visible 💧
- ✓ Straight-edge\* 💧

### Dry areas only

- ✓ Interlock

\*Please note butt seam straight-edge panels are not watertight unless combined with correct accessories and installation techniques. Please refer to Altro Tegulis Installation guide.



## Stacked Tile 8" x 12"

Available in the following joining methods:

### Wet + dry areas

- ✓ Half-lap concealed 💧
- ✗ Half-lap visible 💧
- ✓ Straight-edge\* 💧

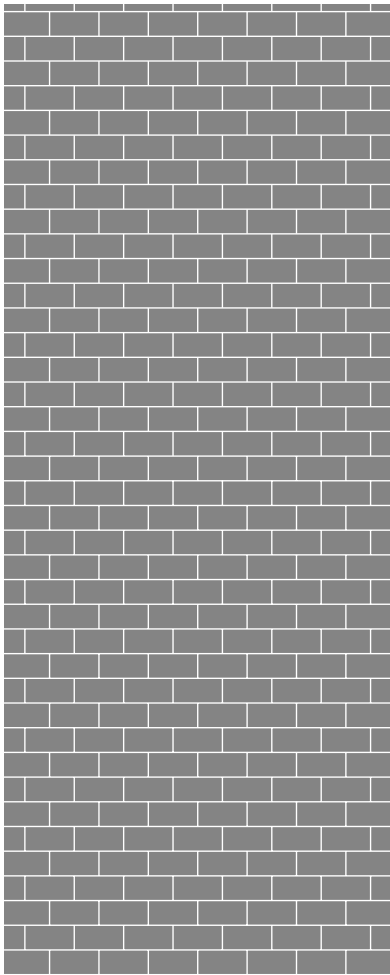
### Dry areas only

- ✓ Interlock

\*Please note butt seam straight-edge panels are not watertight unless combined with correct accessories and installation techniques. Please refer to Altro Tegulis Installation guide.

Your pattern and joining method selection could change the final dimension of your panel. Larger tiles with interlocking join typically have the most waste. You will be proofed with the final dimensions of your panels during the proofing process. Because of the custom nature of this product a small overage is suggested when you place your order.








## Subway Tile 3" x 6"

Available in the following joining methods:

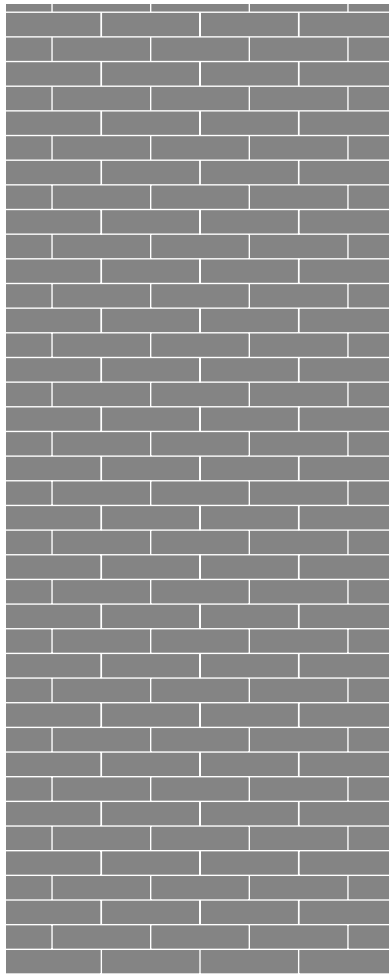
### Wet + dry areas

- ✓ Half-lap concealed  Horizontal axis only
- ✓ Half-lap visible  Vertical axis only
- ✓ Straight-edge\* 

### Dry areas only

- ✓ Interlock  Vertical axis only




\*Please note butt seam straight-edge panels are not watertight unless combined with correct accessories and installation techniques. Please refer to Altro Tegulis Installation guide.



## Subway Tile 3" x 12"

Available in the following joining methods:

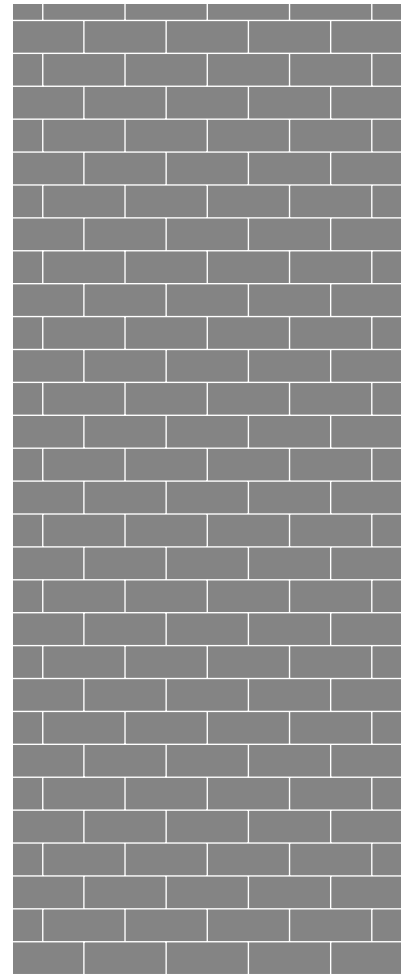
### Wet + dry areas

- ✓ Half-lap concealed  Horizontal axis only
- ✓ Half-lap visible  Vertical axis only
- ✓ Straight-edge\* 

### Dry areas only

- ✓ Interlock  Vertical axis only




\*Please note butt seam straight-edge panels are not watertight unless combined with correct accessories and installation techniques. Please refer to Altro Tegulis Installation guide.



## Subway Tile 4" x 10"

Available in the following joining methods:

### Wet + dry areas

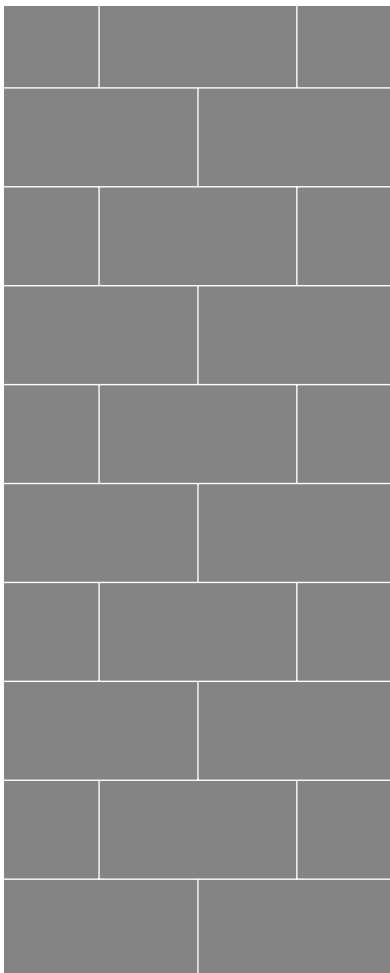
- ✓ Half-lap concealed  Horizontal axis only
- ✓ Half-lap visible  Vertical axis only
- ✓ Straight-edge\* 

### Dry areas only

- ✓ Interlock  Vertical axis only

\*Please note butt seam straight-edge panels are not watertight unless combined with correct accessories and installation techniques. Please refer to Altro Tegulis Installation guide.




Your pattern and joining method selection could change the final dimension of your panel. Larger tiles with interlocking join typically have the most waste. You will be proofed with the final dimensions of your panels during the proofing process. Because of the custom nature of this product [a small overage is suggested when you place your order.](#)



## Subway Tile 12" x 24"

Available in the following joining methods:

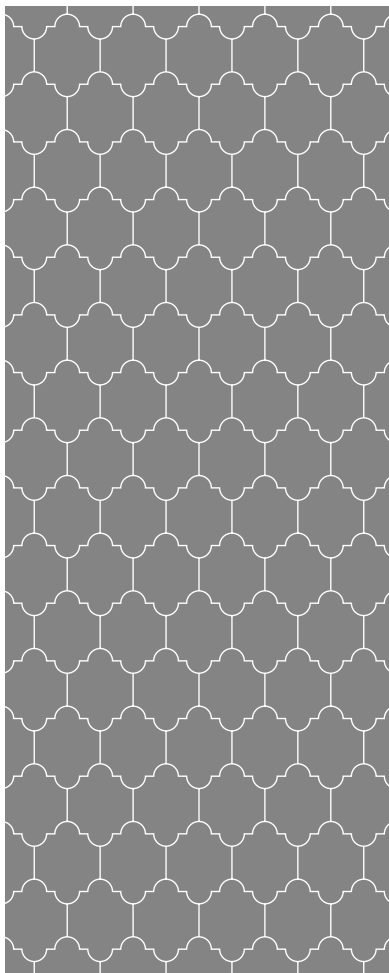
### Wet + dry areas

- ✓ Half-lap concealed  Horizontal axis only
- ✓ Half-lap visible  Vertical axis only
- ✓ Straight-edge\* 

### Dry areas only

- ✓ Interlock  Vertical axis only




\*Please note butt seam straight-edge panels are not watertight unless combined with correct accessories and installation techniques. Please refer to Altro Tegulis Installation guide.



## Palermo

Available in the following joining methods:

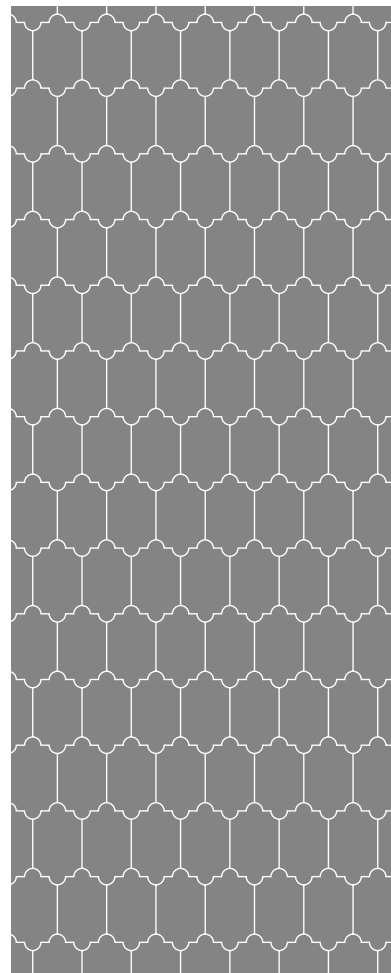
### Wet + dry areas

- ✗ Half-lap concealed 
- ✓ Half-lap visible 
- ✓ Straight-edge\* 

### Dry areas only

- ✓ Interlock




\*Please note butt seam straight-edge panels are not watertight unless combined with correct accessories and installation techniques. Please refer to Altro Tegulis Installation guide.



## Cortino

Available in the following joining methods:

### Wet + dry areas

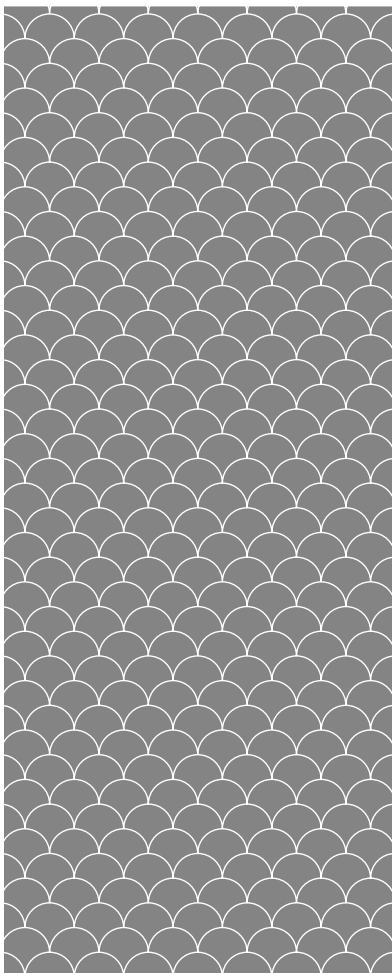
- ✗ Half-lap concealed 
- ✓ Half-lap visible 
- ✓ Straight-edge\* 

### Dry areas only

- ✓ Interlock

\*Please note butt seam straight-edge panels are not watertight unless combined with correct accessories and installation techniques. Please refer to Altro Tegulis Installation guide.

Your pattern and joining method selection could change the final dimension of your panel. Larger tiles with interlocking join typically have the most waste. You will be proofed with the final dimensions of your panels during the proofing process. Because of the custom nature of this product a small overage is suggested when you place your order.



## Fan

Available in the following joining methods:

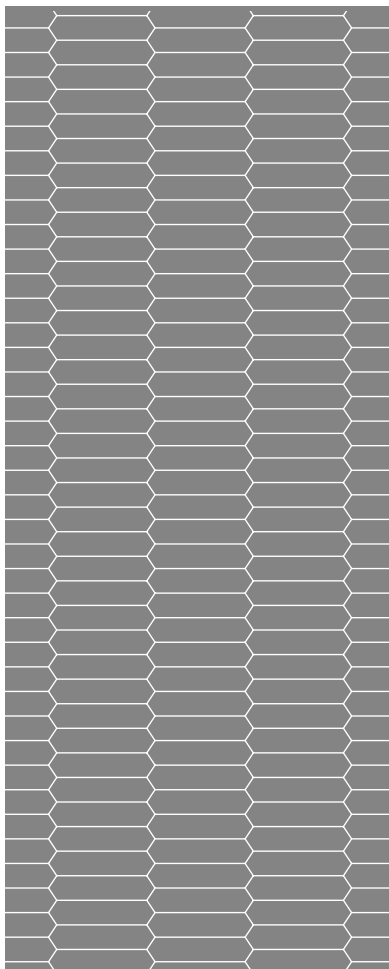
### Wet + dry areas

- ✗ Half-lap concealed 💧
- ✓ Half-lap visible 💧
- ✓ Straight-edge\* 💧

### Dry areas only

- ✓ Interlock Vertical axis only

\*Please note butt seam straight-edge panels are not watertight unless combined with correct accessories and installation techniques. Please refer to Altro Tegulis Installation guide.



## Picket

Available in the following joining methods:

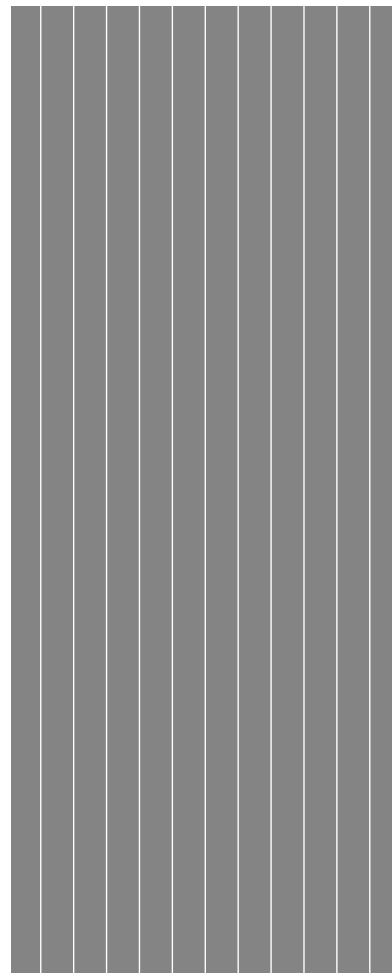
### Wet + dry areas

- ✗ Half-lap concealed 💧
- ✓ Half-lap visible 💧
- ✓ Straight-edge\* 💧

### Dry areas only

- ✓ Interlock

\*Please note butt seam straight-edge panels are not watertight unless combined with correct accessories and installation techniques. Please refer to Altro Tegulis Installation guide.



## Shiplap

Available in the following joining methods:

### Wet + dry areas

- ✓ Half-lap concealed 💧
- ✗ Half-lap visible 💧
- ✓ Straight-edge\* 💧

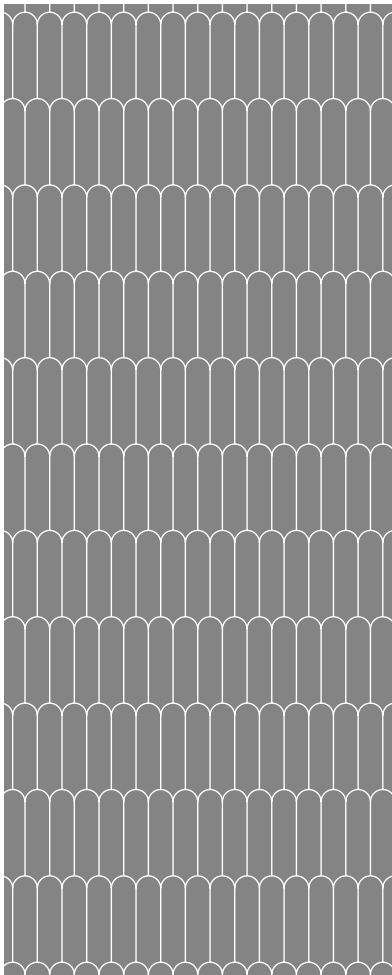
### Dry areas only

- ✗ Interlock

\*Please note butt seam straight-edge panels are not watertight unless combined with correct accessories and installation techniques. Please refer to Altro Tegulis Installation guide.

Your pattern and joining method selection could change the final dimension of your panel. Larger tiles with interlocking join typically have the most waste. You will be proofed with the final dimensions of your panels during the proofing process. Because of the custom nature of this product a small overage is suggested when you place your order.





## Deco

Available in the following joining methods:

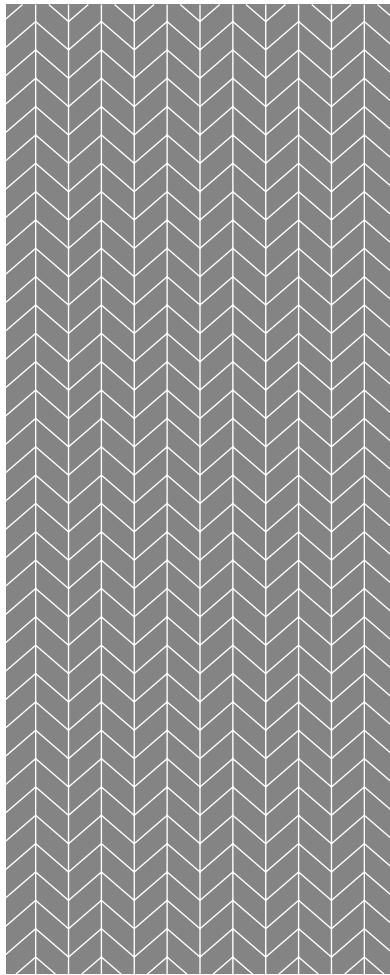
### Wet + dry areas

- ✗ Half-lap concealed 💧
- ✓ Half-lap visible 💧
- ✓ Straight-edge\* 💧

### Dry areas only

- ✓ Interlock

\*Please note butt seam straight-edge panels are not watertight unless combined with correct accessories and installation techniques. Please refer to Altro Tegulis Installation guide.



## Chevron

Available in the following joining methods:

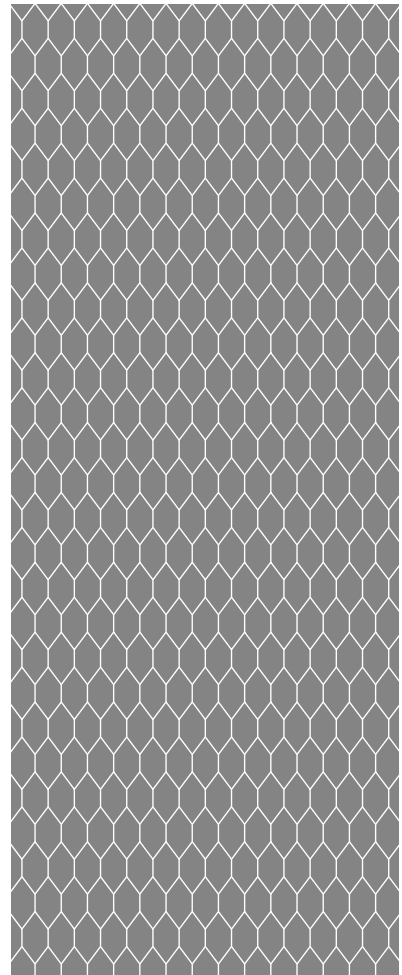
### Wet + dry areas

- ✓ Half-lap concealed 💧 Vertical axis only
- ✗ Half-lap visible 💧
- ✓ Straight-edge\* 💧

### Dry areas only

- ✗ Interlock

\*Please note butt seam straight-edge panels are not watertight unless combined with correct accessories and installation techniques. Please refer to Altro Tegulis Installation guide.



## Scale

Available in the following joining methods:

### Wet + dry areas

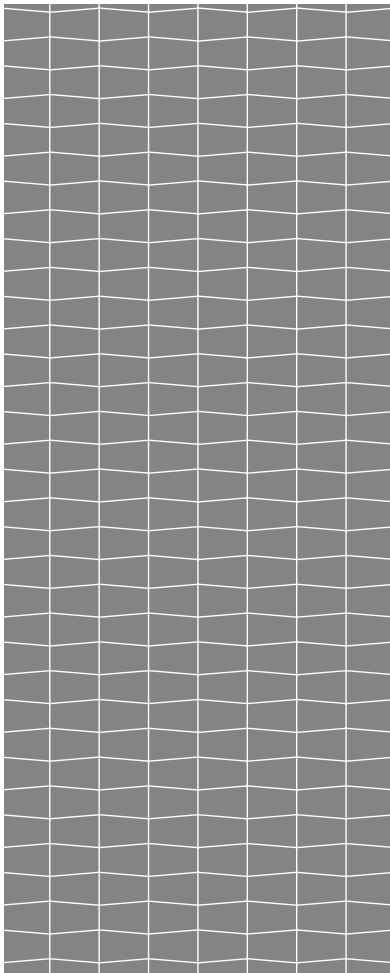
- ✗ Half-lap concealed 💧
- ✓ Half-lap visible 💧
- ✓ Straight-edge\* 💧

### Dry areas only

- ✓ Interlock

\*Please note butt seam straight-edge panels are not watertight unless combined with correct accessories and installation techniques. Please refer to Altro Tegulis Installation guide.

Your pattern and joining method selection could change the final dimension of your panel. Larger tiles with interlocking join typically have the most waste. You will be proofed with the final dimensions of your panels during the proofing process. Because of the custom nature of this product a small overage is suggested when you place your order.



## Trapezoid

Available in the following joining methods:

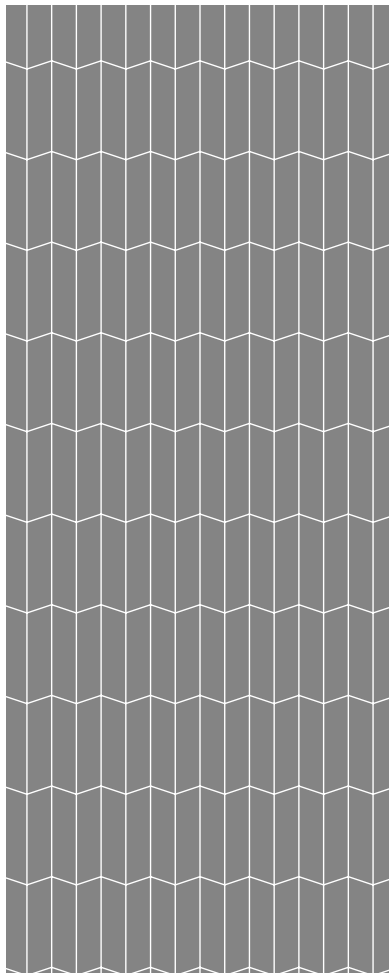
### Wet + dry areas

- ✓ Half-lap concealed 💧
- ✗ Half-lap visible 💧
- ✓ Straight-edge\* 💧

### Dry areas only

- ✓ Interlock Vertical axis only

\*Please note butt seam straight-edge panels are not watertight unless combined with correct accessories and installation techniques. Please refer to Altro Tegulis Installation guide.



## Accordion

Available in the following joining methods:

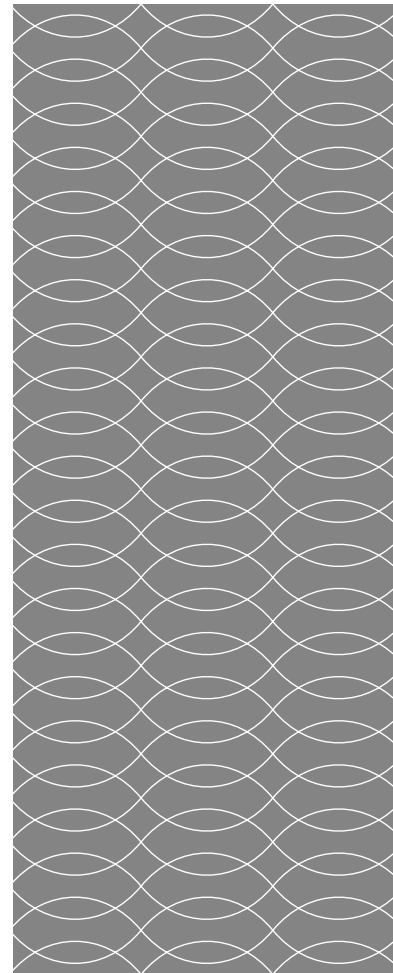
### Wet + dry areas

- ✓ Half-lap concealed 💧
- ✗ Half-lap visible 💧
- ✓ Straight-edge\* 💧

### Dry areas only

- ✓ Interlock Horizontal axis only

\*Please note butt seam straight-edge panels are not watertight unless combined with correct accessories and installation techniques. Please refer to Altro Tegulis Installation guide.



## Surfboard

Available in the following joining methods:

### Wet + dry areas

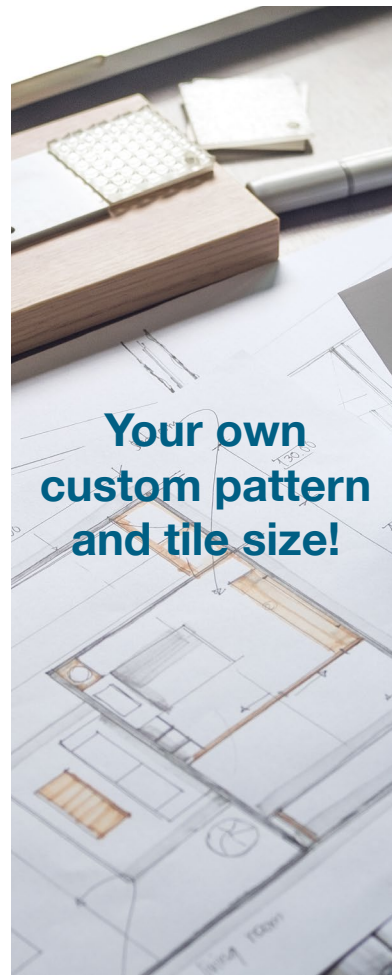
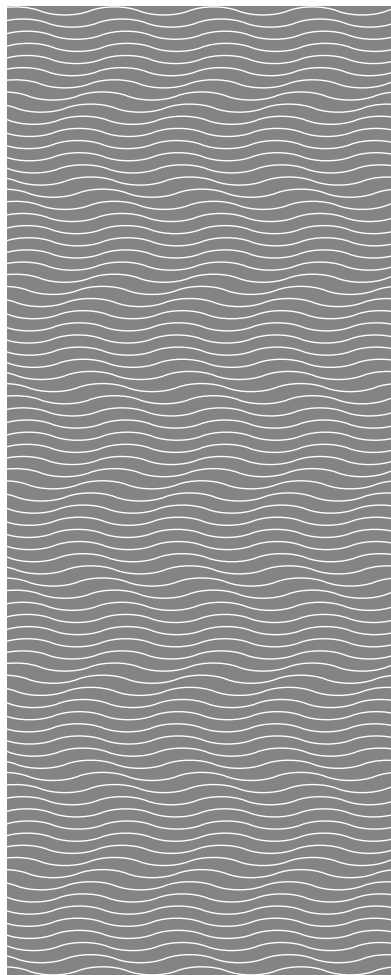
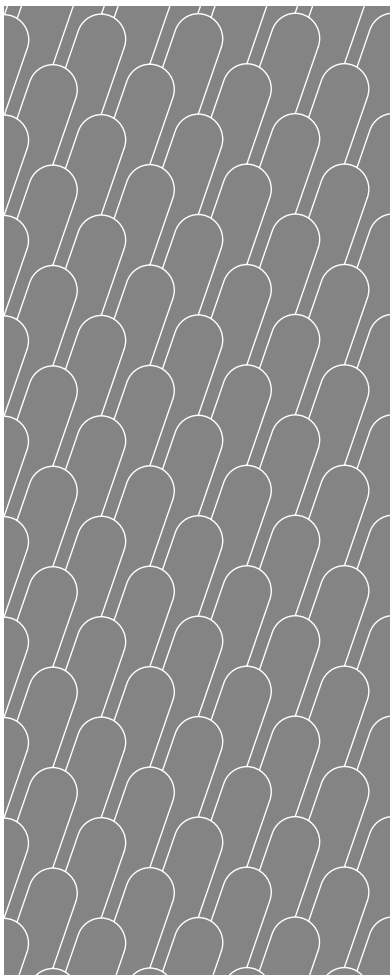
- ✗ Half-lap concealed 💧
- ✓ Half-lap visible 💧
- ✓ Straight-edge\* 💧

### Dry areas only

- ✓ Interlock Horizontal axis only

\*Please note butt seam straight-edge panels are not watertight unless combined with correct accessories and installation techniques. Please refer to Altro Tegulis Installation guide.

Your pattern and joining method selection could change the final dimension of your panel. Larger tiles with interlocking join typically have the most waste. You will be proofed with the final dimensions of your panels during the proofing process. Because of the custom nature of this product a small overage is suggested when you place your order.



## Speakeasy

Available in the following joining methods:

### Wet + dry areas

- ✗ Half-lap concealed 💧
- ✓ Half-lap visible 💧
- ✓ Straight-edge\* 💧

### Dry areas only

- ✓ Interlock Vertical axis only

\*Please note butt seam straight-edge panels are not watertight unless combined with correct accessories and installation techniques. Please refer to Altro Tegulis Installation guide.

## Waves

Available in the following joining methods:

### Wet + dry areas

- ✗ Half-lap concealed 💧
- ✓ Half-lap visible 💧
- ✓ Straight-edge\* 💧

### Dry areas only

- ✗ Interlock

\*Please note butt seam straight-edge panels are not watertight unless combined with correct accessories and installation techniques. Please refer to Altro Tegulis Installation guide.

## Custom pattern

If your project requires a custom pattern of Altro Tegulis, we're happy to accommodate!

Simply reach out to us with your specific needs, and we'll work with you to create the perfect solution tailored to your project.

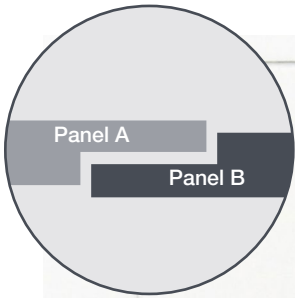
Your pattern and joining method selection could change the final dimension of your panel. Larger tiles with interlocking join typically have the most waste. You will be proofed with the final dimensions of your panels during the proofing process. Because of the custom nature of this product a small overage is suggested when you place your order.





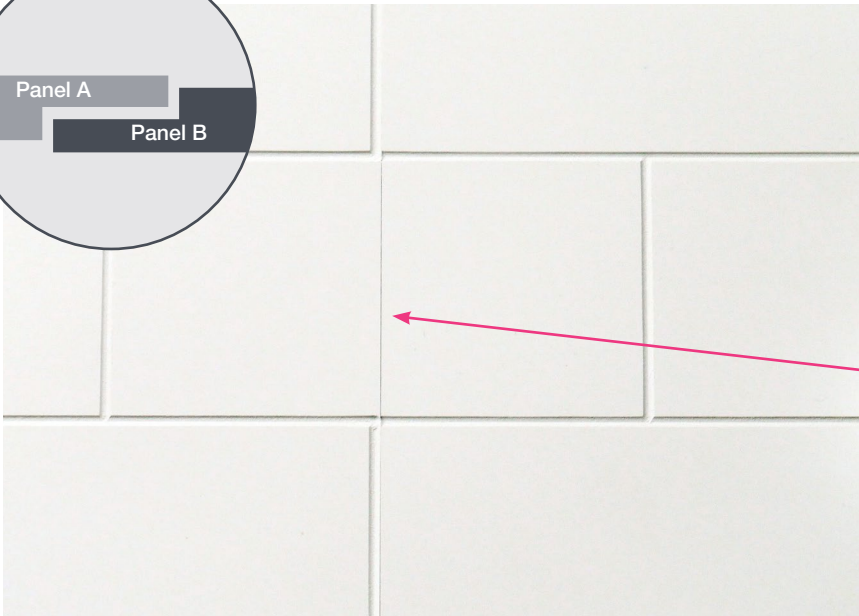
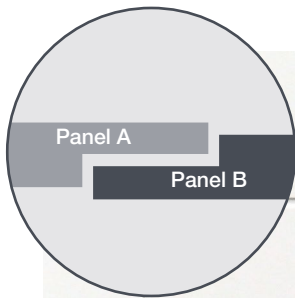
3" x 12" Stacked Tile pattern shown in  
Altro Whiterock Chameleon Hawaiian Palm

# Joining methods



## Half-lap concealed

The panel edges are beveled to fit seamlessly on top of one another, creating a smooth, watertight join. Additionally, the concealed transition along all grout lines ensures a nearly invisible connection.

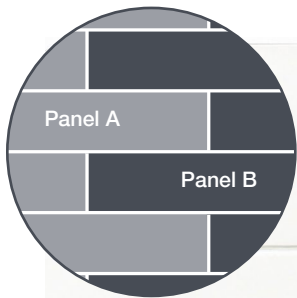


## Half-lap visible

The panel edges are beveled to fit seamlessly on top of one another, creating a watertight join. While the visible transition may leave a seam visible on some tiles, rest assured this still provides a watertight solution.



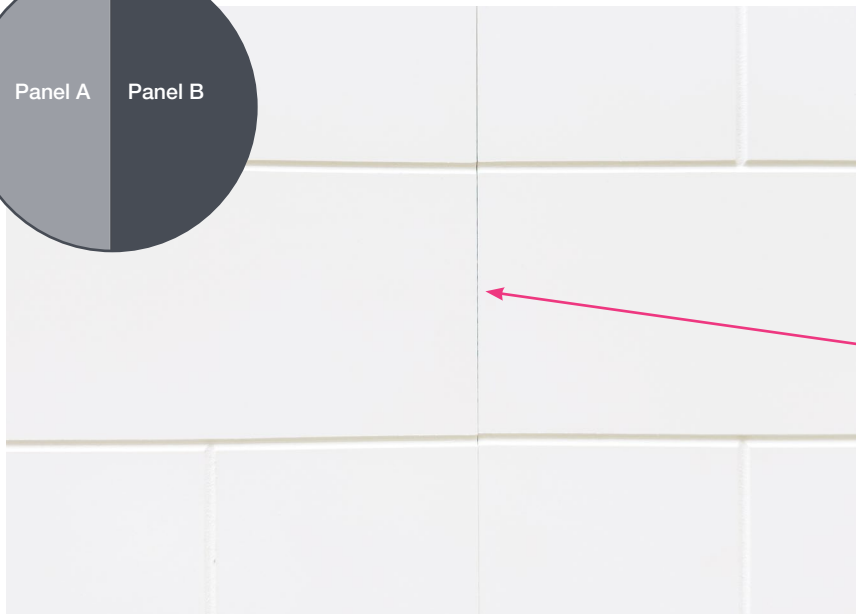
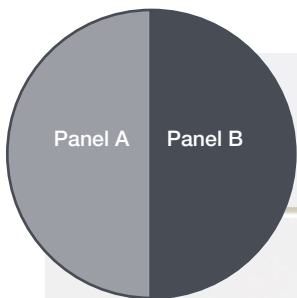




### Interlocking

Tiles protrude from each panel, creating a simple, puzzle-like interlock ideal for dry areas. Keep in mind that selecting larger tiles in this format may result in more waste per panel.

Dry areas only.



### Straight-edge

Ideal for single panel installations or butt seam joins. Note that a straight-edge butt seam will be visible at the panel joins and is not watertight.

Dry areas only. Only watertight when combined with accessories - like with Shower Kit installations.

*Joint strip joins are possible with straight-edge panels, but they are not recommended as they can disrupt the tile appearance. If you're considering joint strips for a multi-panel Altro Tegulis installation, please consult your sales representative for guidance.*

# Shower and tub kits

Easy-to-order and easy-to-install kits for your shower and tub needs

With our new, easy-to-order shower and tub kits, you can streamline the installation process, saving time and ensuring a seamless, high-quality finish across multiple units. Whether you're working on a single project or outfitting several spaces, our kits guarantee uniformity and a beautiful, professional appearance every time.

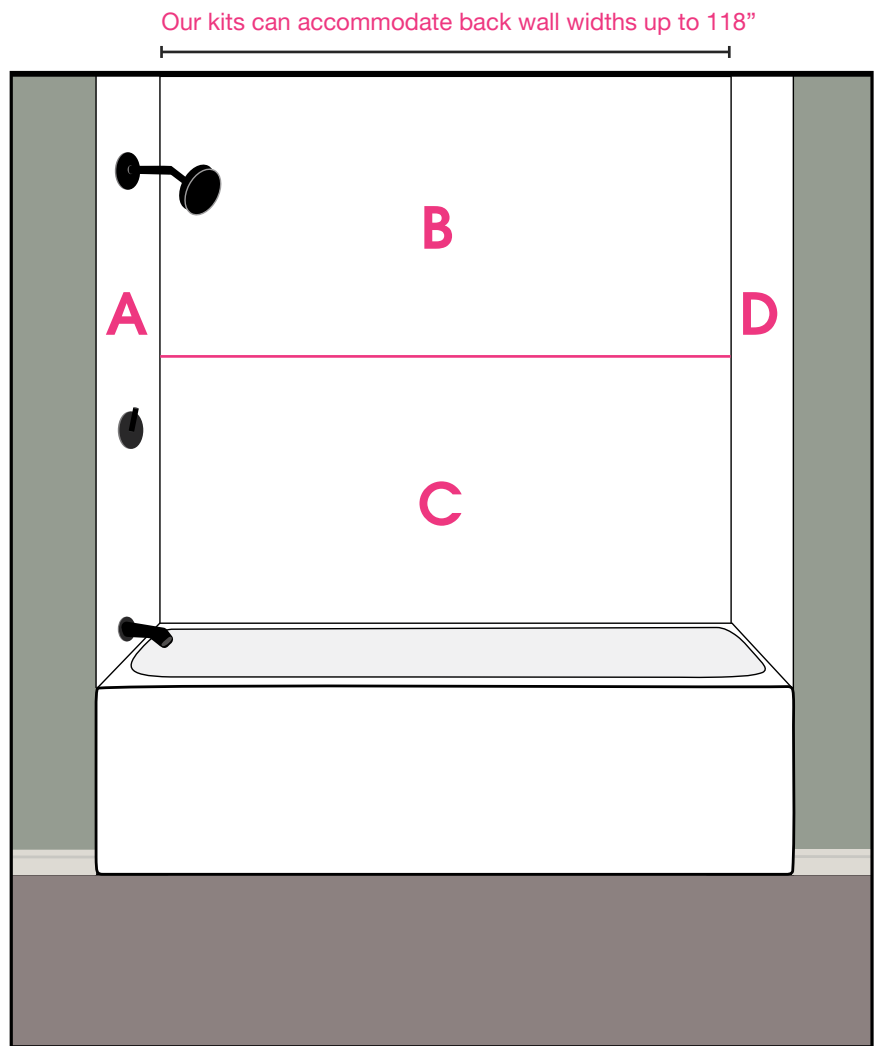
Designed for both commercial and residential applications, these kits are ideal for new construction and renovation projects alike. They offer a fast and efficient alternative to traditional methods, providing a hygienic and durable solution that eliminates common maintenance issues associated with other materials.

Perfect for a wide range of environments, our kits are an excellent choice for:

- Hotels
- Apartment communities
- Student accommodations
- Residential care facilities
- Senior living communities
- Locker rooms
- Hospitals
- Private homes



3" x 6" subway tile pattern shown in  
Altro Whiterock Standard White



Project Worksheets are available through your Altro Sales Representative to start your order submission. Panels dimensions can be made to your specific dimensions or you can opt for full size panels and cut down on site. Not sure who your Sales Representative is? Send an email [FabProjects@altro.com](mailto:FabProjects@altro.com) and we will assist you.

No matter the sector, our shower and tub kits are engineered to meet the unique needs of each installation, offering reliability, ease of use, and a stunning result. **Start your project on the Altro Tegulis web page!**



3" x 12" stacked tile pattern shown in  
AWWD Cool Mineral



# Altro in action

An Altro Tegulis case study

Alliance Health at Marie Esther, a senior living community, renovated its facilities to create a more homely and supportive environment for residents, particularly those with dementia. Altro Tegulis tile-effect wall panels and Altro Aquarius flooring were chosen for their combination of aesthetic appeal, ease of maintenance, and enhanced hygiene and safety, providing a comfortable and infection-resistant solution for the upgraded bathrooms.

Discover the full case study - scan the QR code



Altro Tegulis has achieved ICC-ES product certification and is in compliance with the following plumbing code standards:

- ANSI/ICPA SS-1 2001, Performance standard for Solid Surface Materials
- IAPMO PS 106-2015e1, Tileable Shower Receptors and Shower Kits

By complying with these standards this means that Altro Tegulis is approved to be used in showers or other wet areas.



For more info please scan the QR code.



3" x 12" stacked tile pattern shown in  
AWWD Cool Mineral



# Altro in action

An Altro Tegulis case study

The Sheffield Olympic Legacy Park was created to inspire a healthier, stronger future for all, becoming the first Olympic legacy park outside a host city. To match the high standards of this world-class facility, architects selected Altro products for their durability, easy installation, and hygiene benefits in key areas like changing rooms, showers, and physiotherapy suites. The chosen materials—Altro Tegulis, Altro Aquarius, Altro Atlas 40, and Altro Wood—were specifically chosen for their ability to withstand heavy traffic, wet conditions, and provide a welcoming atmosphere.

Discover the full case study - scan the QR code



Chevron pattern shown in  
AWWD Warm Woodgrain and  
Altro Whiterock Standard White





## Commercial areas to consider installing Altro Tegulis



Healthcare (hospitals, nursing homes, etc.)



Lobbies and front-of-house spaces



Locker rooms and leisure facilities



Retail





Commercial kitchens (not to be used above/behind heat sources without a stainless steel deflector in place).



Offices



Hospitality and hotels

## Residential areas to consider installing Altro Tegulis



Kitchen back splash - Apartment homes, senior living and student accommodations



Showers - Student accommodations





Picket pattern shown in  
Altro Whiterock Chameleon  
Pure Innocence

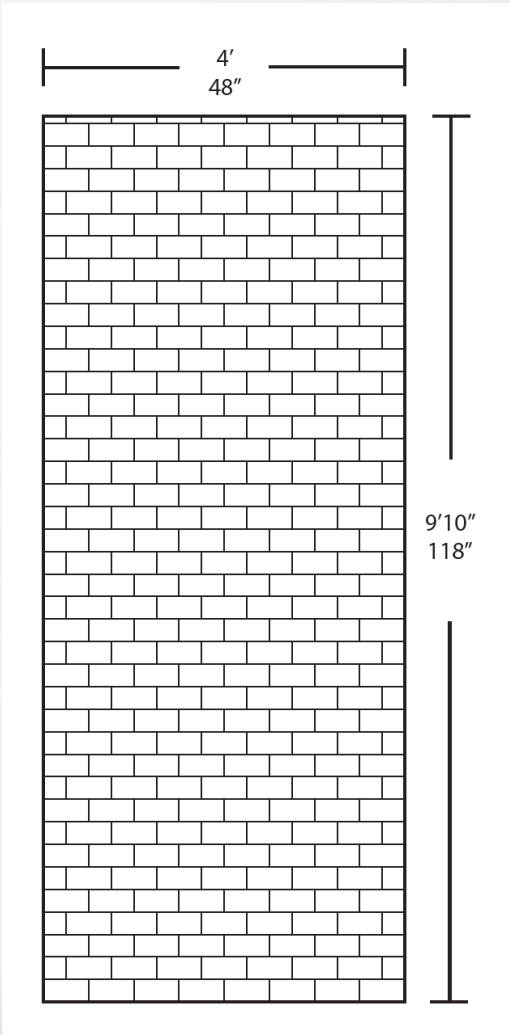
# In-stock options

We're thrilled to announce that we now offer two configurations of Altro Tegulis as stocked inventory in all three of our North American warehouses. These configurations are designed for smaller urgent projects, providing a faster solution when custom-made Altro Tegulis isn't an option due to time constraints.

To ensure availability, we aim to keep approximately 20 panels of each configuration in stock at every warehouse, with continuous replenishment as inventory depletes. We do limit the amount of in-stock Altro Tegulis you are allowed to purchase at a time.

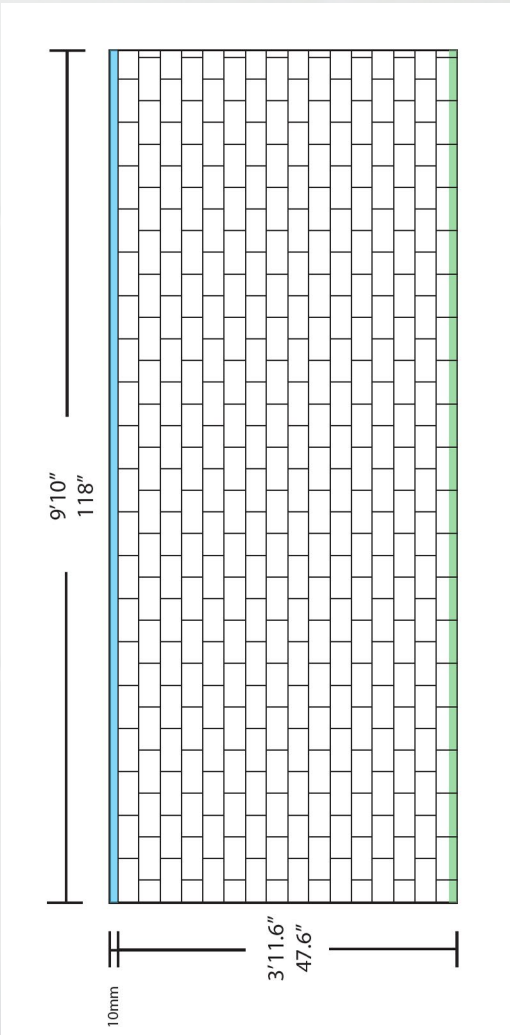
## Configuration A

Standard White  
118" Vertical panel  
3x6 Subway Tile  
Straight-edge / Butt-seam



## Configuration B






Standard White  
118" Horizontal panel  
3x6 Subway Tile  
Half-lap joining



This panel should be installed horizontally. Due to space in this brochure it has been rotated. Blue and green indicate watertight lapjoint along panel edges.

# Altro Tegulis

Hygienic wall panels in chic tile designs

Thickness	2.5mm   .10"		
Panel dimensions	8' - 4' x 8' 2"   1.22m x 2.5m *nominal 10' - 4' x 9' 10"   1.22m x 3.0m *nominal		
Weight	8' - 24.20lbs   10.98kg 10' - 28.57lbs   12.96 kg		
Warranty		5 years	
Fire and smoke performance		CAN/ULC - S102.1 ASTM E84	Tested Class A
VOC emissions		CA 01350	Pass
Maximum service temperature	140°F (60°C)		
Mold resistance		ASTM D3273	Excellent Score of 10
Fungi resistance		ASTM G21	Passes rating 0* *achieves zero growth after 21 days
UV exposure	ASTM G154		Tested
Composition	Semi-rigid virgin PVCu with a tight molecular structure and incorporated UV stabilizers.		
Installation	Follow instructions detailed in the Altro Tegulis Installation Guide to select your preferred installation method.		

## LEED facts



LEED v4

This product may help contribute to the following credits

Altro Tegulis

2



Environmental quality  
Low emitting materials, walls

1

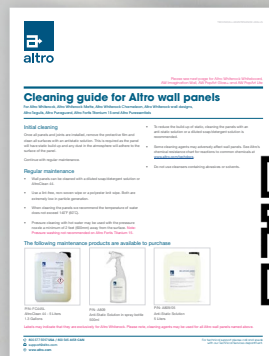
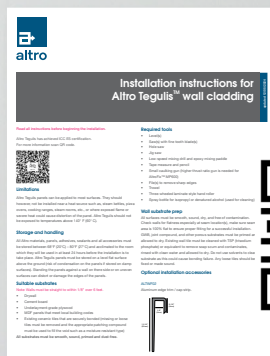


Environmental quality  
Low emitting materials, adhesives

1

Discover more of our sustainability story and credentials at [altro.com](http://altro.com)

## More resources



For more information on installation please see our Altro Tegulis installation guide or ask a technical representative.

Simple cleaning information is also available as a separate document for end-users.



## Discover more online!

- Maintenance guides
- Installation guides
- LEED forms
- CSI/CSC specifications
- SDS sheets
- Warranty forms
- BIM components
- Detail drawings and CAD files
- High resolution swatch downloads
- Photo galleries
- and more!

Follow us



 **USA** 800 377 5597

 **CANADA** 800 565 4658

 support@altro.com

 www.altro.com

Content was correct at time of print. Altro reserves the right to change any detail. Please consult [www.altro.com](http://www.altro.com) or your local Sales Representative for the latest product information.