



# DSDC product accreditation

## Altro Pisces™

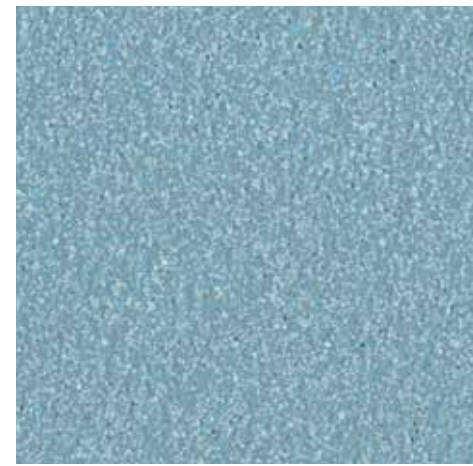
### Class 1a



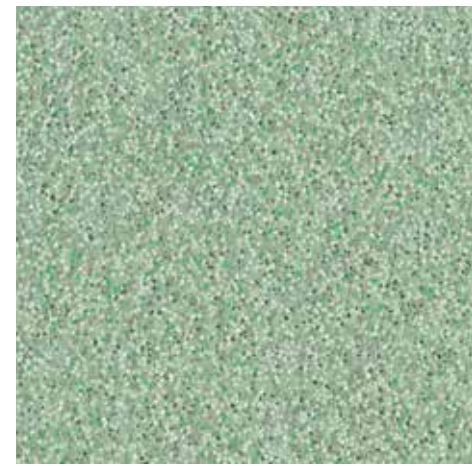
Jellyfish | SB2005 | LRV 46



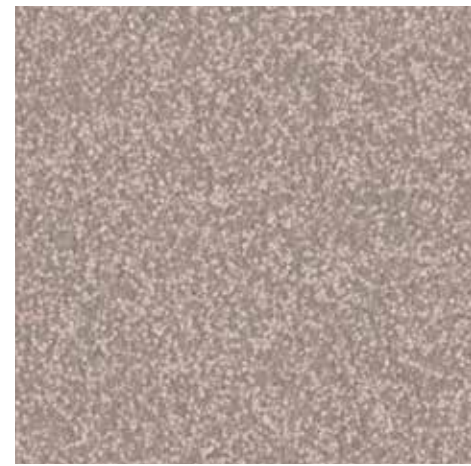
Deckchair | SB2013 | LRV 50



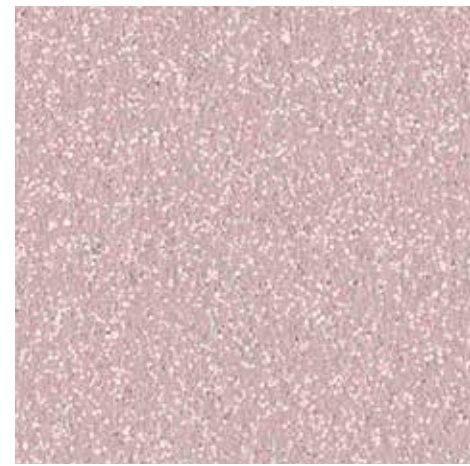
Sea Urchin | SB2014 | LRV 34



Windbreak | SB2016 | LRV 38



Driftwood | SB2004 | LRV 32



Seahorse | SB2011 | LRV 47



Fisherman | SB2009 | LRV 48



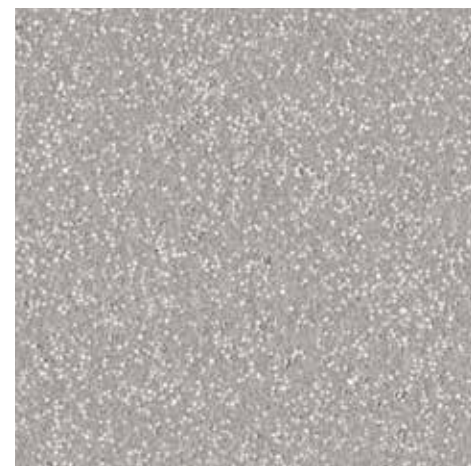
Breakwater | SB2003 | LRV 42



Lighthouse | SB2001 | LRV 70

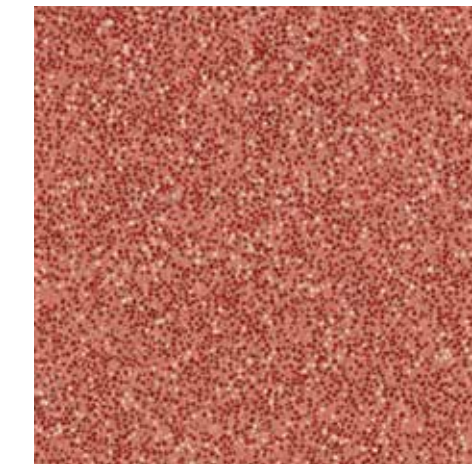


Cuttlefish | SB2002 | LRV 50

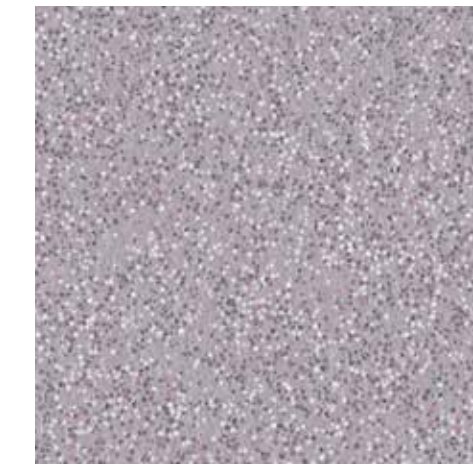


Shoreline | SB2006 | LRV 38

### Class 1b



Starfish | SB2010 | LRV 21



Beach Hut | SB2012 | LRV 37



Anchor | SB2008 | LRV 16



Porthole | SB2007 | LRV 30



Houseboat | SB2015 | LRV 25



Sand Dune | SB2018 | LRV 20

#### DSDC product accreditation rating key

##### class 1a

Finishes within this rating are plain and can be used indiscriminately.

That said, bear in mind the need to contrast flooring with walls, skirtings, doors / frames, furniture & sanitary ware.

Contrast is the key word.

We recommend a minimum contrast of 30 units LRV (Light Reflectance Value) between the critical surfaces mentioned above.

Finishes within this rating are semi-plain (minimal texture or fleck / and or minimum contrast between fleck / pattern, wood effect with no knots) and in general, can be used throughout.

#### DSDC product accreditation rating key

##### class 1b

Natural patterns such as timber and stone may be used in most areas due to their familiarity but with a degree of caution.

Bear in mind minimum contrast of 30 units LRV (Light Reflectance Value) between the critical surfaces mentioned above.

The DSDC ratings shown are for guidance, other colours within this range are available for use, please contact us for any queries.