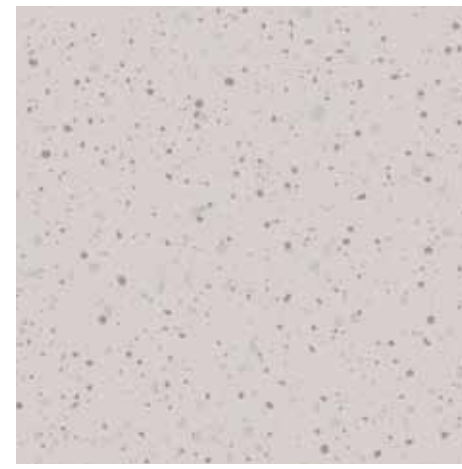




DSDC product accreditation

Altro Illustra™ adhesive-free

Class 1a



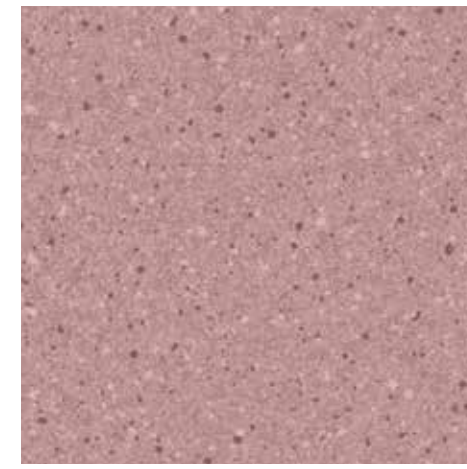
Soft Blush | LUAF2408 | LRV 57



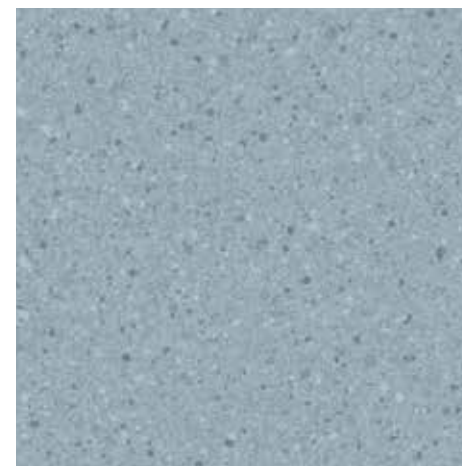
Distant Shore | LUAF2401 | LRV 43



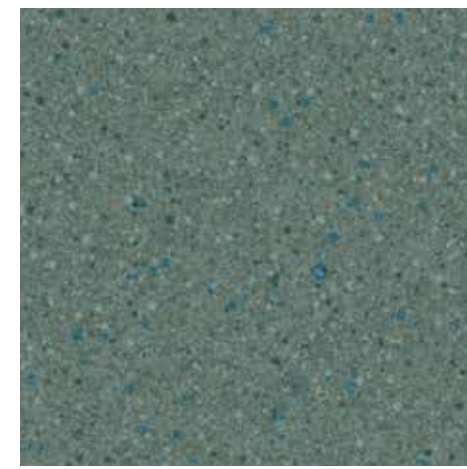
Tamarind | LUAF2404 | LRV 26



Rose Petal | LUAF2405 | LRV 29



Waters Edge | LUAF2407 | LRV 38



Ivy League | LUAF2406 | LRV 20

Class 1b



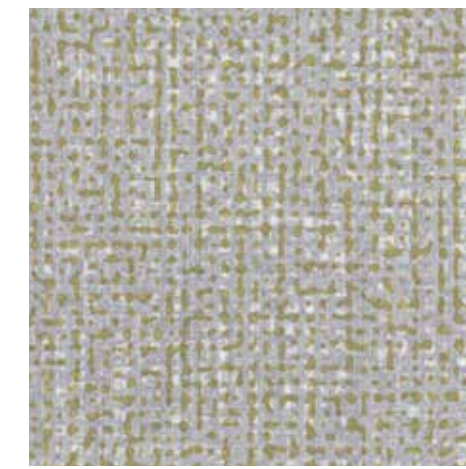
Shrouded Mountain | LUAF2417 | LRV 55



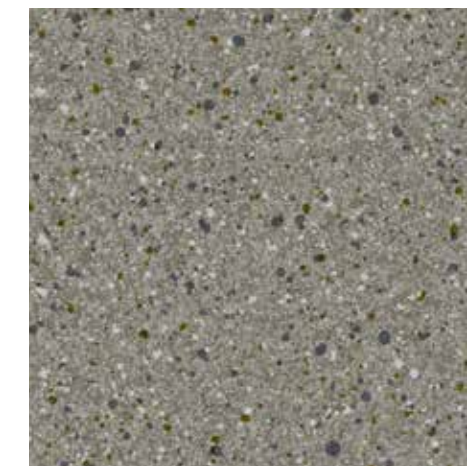
Stepping Stone | LUAF2416 | LRV 55



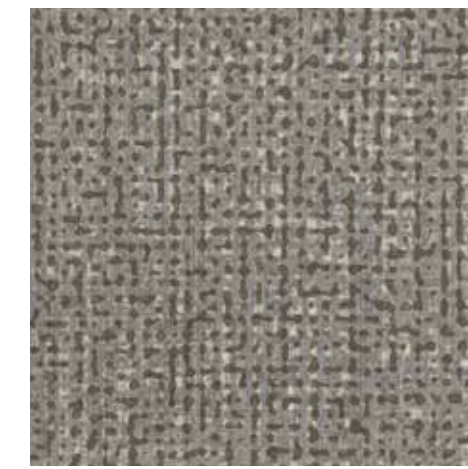
Cobblestone | LUAF2414 | LRV 41



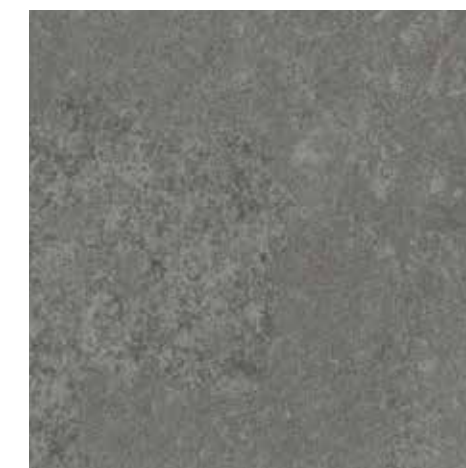
Cotton Twist | LUAF2409 | LRV 38



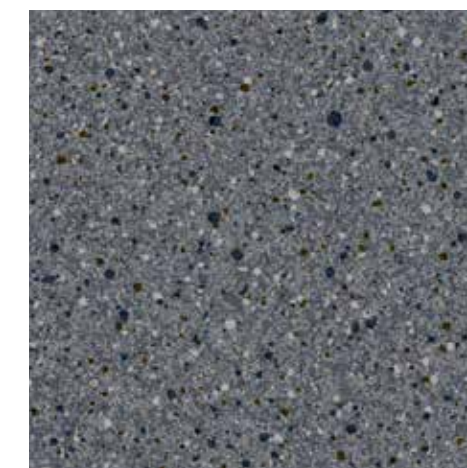
Touchstone | LUAF2402 | LRV 27



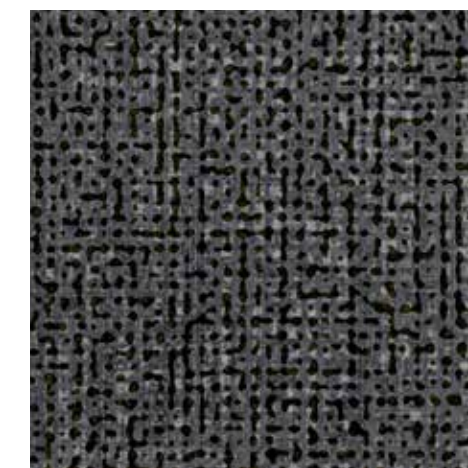
Tranquil Twist | LUAF2410 | LRV 25



Hammerhead | LUAF2415 | LRV 20



Dusky Grit | LUAF2403 | LRV 17



Deep Twist | LUAF2411 | LRV 12

DSDC product accreditation rating key

class 1a

Finishes within this rating are plain and can be used indiscriminately.

That said, bear in mind the need to contrast flooring with walls, skirtings, doors / frames, furniture & sanitary ware.

Contrast is the key word.

We recommend a minimum contrast of 30 units LRV (Light Reflectance Value) between the critical surfaces mentioned above.

Finishes within this rating are semi-plain (minimal texture or fleck / and or minimum contrast between fleck / pattern, wood effect with no knots) and in general, can be used throughout.

DSDC product accreditation rating key

class 1b

Natural patterns such as timber and stone may be used in most areas due to their familiarity but with a degree of caution.

Bear in mind minimum contrast of 30 units LRV (Light Reflectance Value) between the critical surfaces mentioned above.

The DSDC ratings shown are for guidance, other colours within this range are available for use, please contact us for any queries.